

**DEMOLITION NOTES:**

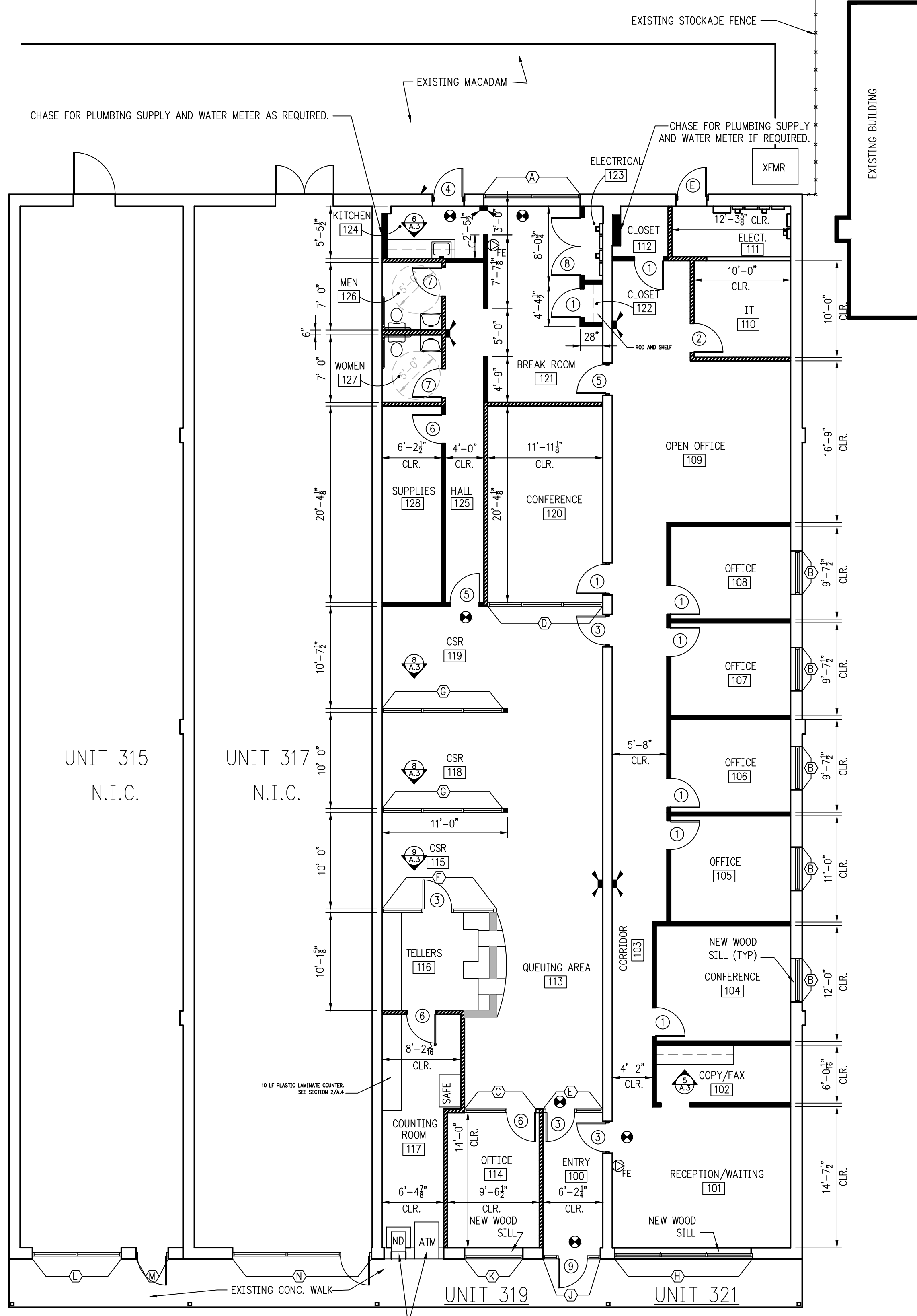
1. CONTRACTOR TO FIELD VERIFY ALL DIMENSIONS AND CONDITIONS PRIOR TO COMMENCING DEMOLITION.
2. REMOVE ENTIRE SUSPENDED ACOUSTICAL CEILING SYSTEM THROUGHOUT ENTIRE WORK SPACE, EXCEPT IN ELECTRICAL ROOM IN UNIT 321.
3. REMOVE ALL ASSOCIATED ELECTRICAL FIXTURES AND WIRING. REMOVE FIBERGLASS BATT INSULATION ABOVE CEILING. REMOVE ALL HVAC DIFFUSERS AND FLEX DUCT. EXISTING DUCTWORK AND DIFFUSERS TO BE SAVED AND CLEANED FOR REUSE. REPAIR DUCT MAINS AS REQUIRED.
4. REMOVE ALL EXISTING INTERIOR PARTITIONS AS SHOWN DASHED ON PLAN.
5. REMOVE EXISTING DOORS AND FRAMES AS SHOWN ON PLAN.
6. REMOVE EXISTING CMU WALLS AS REQUIRED FOR NEW DOORS. INSTALL NEW CMU LINTEL AS REQUIRED.
7. REMOVE EXISTING VCT & VB IN UNIT 321 AND SCRAP LOOSE PAINT ON FLOOR IN UNIT 319. ALL FLOORS TO BE PATCHED AS REQUIRED FOR NEW FLOORING.
8. PATCH EXISTING GMB WALLS AS REQUIRED FOR SMOOTH FINISH WITH NEW LAYOUT.
9. REMOVE PORTION OF EXISTING CMU KNOCK PANEL FOR NEW WINDOW. SEE WINDOW SCHEDULE FOR SILL HEIGHT.
10. REMOVE MISC. SHELVING, PEGBOARD, PHONE AND DATA WIRING.
11. SEE ELECTRICAL DRAWINGS FOR ELECTRICAL DEMOLITION.
12. ENTIRE PROPERTY TO BE KEPT CLEAR AND CLEAN OF DEMOLITION DEBRIS FOR DURATION OF PROJECT.
13. REMOVE PORTION OF EXISTING CMU BEARING WALL FOR NEW WINDOW OPENINGS. INSTALL NEW CMU LINTELS AS REQUIRED.

**PLUMBING DEMOLITION NOTES:**

1. REMOVE ALL PLUMBING FIXTURES AND RELATED PIPING TO METERS. CAP SUPPLY LINE AFTER METER IN UNIT 321.
2. WATER HEATER IN UNIT 319 TO BE SAVED AND RELOCATED ABOVE CEILING IN TOILET ROOM AREA WITH DRIP PAN AND DRAIN.
3. REMOVE/CAP SUPPLY AND DRAIN LINES IN CENTER OF UNIT 321.
4. CAP SEWER LINE IN FLOOR OF UNIT 319 AS SHOWN.

1 FLOOR PLAN - DEMOLITION

SCALE: 1/8" = 1'-0"



**SYMBOLS LEGEND**

- ⊕ NEW ILLUMINATED EXIT SIGN
- ⚡ NEW EMERGENCY LIGHTING WITH BATTERY BACKUP
- FE NEW FIRE EXTINGUISHER
- Ⓐ SEE WINDOW ELEVATIONS SHEET A.3
- ① SEE DOOR SCHEDULE SHEET A.3

**WALL LEGEND**

- EXISTING WALLS TO REMAIN AS-IS
- ▨ NEW PRIVACY PARTITION  
3/8" METAL STUD AT 16" O.C. WITH ONE LAYER 1/2" G.W.B. BOTH SIDES AND BATT INSULATION BETWEEN. FINISH FLOOR TO 12" ABOVE CEILING.
- ▬ NEW CEILING HIGH PARTITION WALL  
3/8" METAL STUD AT 16" O.C. WITH ONE LAYER 1/2" G.W.B. BOTH SIDES. FINISH FLOOR TO BOTTOM OF CEILING GRID.

**IBC 2003 INTERNATIONAL BUILDING CODE**

AREA: BUILDING AREA: 9,066 SF  
 AREA OF IMPROVEMENT: 4,863 SF  
 USE: 'B'  
 CONSTRUCTION TYPE: 2B - UNPROTECTED  
 SPRINKLER SYSTEM: NONE

**PLUMBING TO BE DESIGN/BUILD**  
 CONTRACTOR TO DETERMINE EXACT LOCATIONS AND SIZE ALL FIXTURES AND ASSOCIATED PIPING FOR A COMPLETE JOB. CONTRACTOR TO SUPPLY ALL PLUMBING ENGINEERING. WORK IS TO CONFORM TO NATIONAL PLUMBING CODE AND ALL OTHER APPLICABLE CODES & STANDARDS.

**ELECTRICAL TO BE DESIGN/BUILD**  
 CONTRACTOR TO DETERMINE EXACT LOCATIONS FOR ALL ELECTRICAL FIXTURES, DEVICES AND EQUIPMENT FOR A COMPLETE JOB. CONTRACTOR TO SUPPLY ALL ELECTRICAL ENGINEERING. WORK IS TO CONFORM TO NEC AND ALL OTHER APPLICABLE CODES & STANDARDS.

**HVAC TO BE DESIGN/BUILD**  
 CONTRACTOR TO DETERMINE EXACT LOCATIONS AND SIZE ALL HVAC EQUIPMENT FOR A COMPLETE JOB. CONTRACTOR TO SUPPLY ALL MECHANICAL ENGINEERING. WORK IS TO CONFORM TO ASHRAE, SMACNA AND ALL OTHER APPLICABLE CODES AND STANDARDS.

**ARCHITECTURAL SERVICES**  
 RESIDENTIAL AND COMMERCIAL  
 DESIGN AND CONSTRUCTION  
 610.532.3722  
 411 SYCAMORE AVENUE • FOLSOM • PENNSYLVANIA

**PROPOSED LOANS/LENDING OPERATION**  
 BUCKS COUNTY BRANCH  
 315 EAST STREET ROAD  
 WARMINSTER TOWNSHIP, BUCKS COUNTY, PENNSYLVANIA



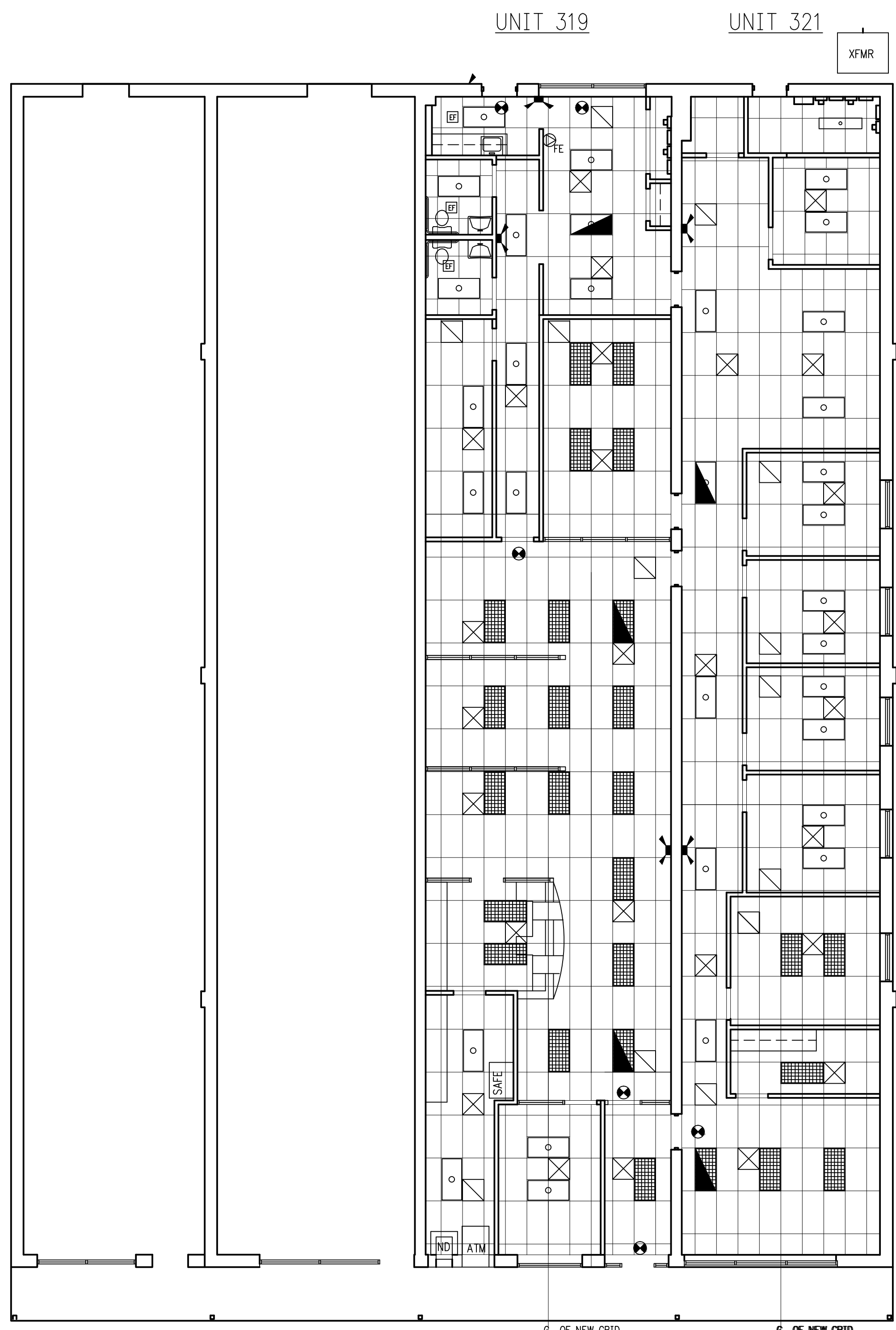
DATE: AUG. 22, 2005

REVISIONS

**A.1**

2 FLOOR PLAN - NEW CONSTRUCTION

SCALE: 1/8" = 1'-0"



**SYMBOLS LEGEND**

	EXHAUST FAN
	HVAC SUPPLY
	HVAC RETURN
	2'x4' FLOURESCENT LIGHT WITH PRISMATIC LENSE
	2'x4' FLOURESCENT NITE LIGHT WITH PRISMATIC LENSE
	EXIST. FLOURESCENT LIGHT TO REMAIN
	NEW 2'x4' (1-1/2'') CELL SILVER PARABOLIC FIXTURES WITH ELECTRONIC BALLASTS AND 3-T8 LAMPS.

ELECTRICAL TO BE DESIGN/BUILD CONTRACTOR TO DETERMINE EXACT LOCATIONS FOR ALL ELECTRICAL FIXTURES, DEVICES AND EQUIPMENT FOR A COMPLETE JOB. CONTRACTOR TO SUPPLY ALL ELECTRICAL ENGINEERING. WORK IS TO CONFORM TO NEC AND ALL OTHER APPLICABLE CODES & STANDARDS.

HVAC TO BE DESIGN/BUILD CONTRACTOR TO DETERMINE EXACT LOCATIONS AND SIZE ALL HVAC EQUIPMENT FOR A COMPLETE JOB. CONTRACTOR TO SUPPLY ALL MECHANICAL ENGINEERING WORK IS TO CONFORM TO ASHRAE, SMACNA AND ALL OTHER APPLICABLE CODES AND STANDARDS.

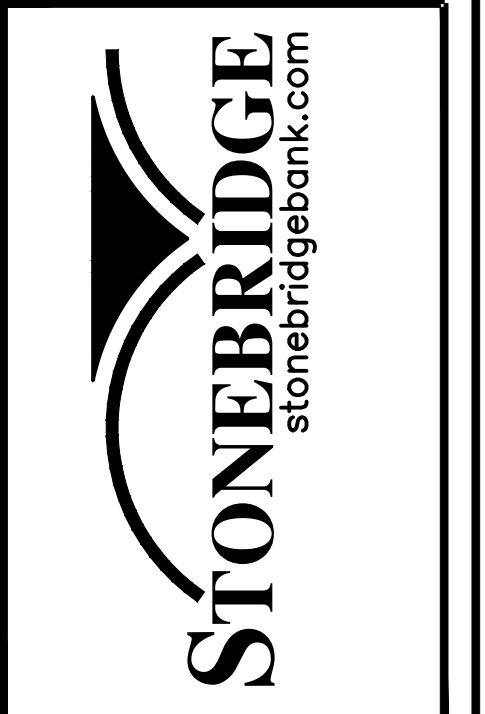
CEILING NOTE:  
NEW SUSPENDED ACCOUSTICAL CEILING WILL BE INSTALL AT TWO DIFFERENT HEIGHTS, SEE PLAN ABOVE. ALL NEW 2'x4' TILE TO BE 2'x2' LOOK-ALIKE ENTIRE CEILING AREA TO BE INSULATED WITH 6" FIBERGLASS INSULATION.

**1 CEILING PLAN**

SCALE: 1/8" = 1'-0"

**ARCHITECTURAL SERVICES**  
RESIDENTIAL AND COMMERCIAL  
DESIGN AND CONSTRUCTION  
610.532.3722  
411 SYCAMORE AVENUE • FOLSOM • PENNSYLVANIA

PROPOSED LOANS/LENDING OPERATION  
BUCKS COUNTY BRANCH  
315 EAST STREET ROAD  
WARMINSTER TOWNSHIP, BUCKS COUNTY, PENNSYLVANIA



DATE: 22 AUG. 05

REVISIONS	

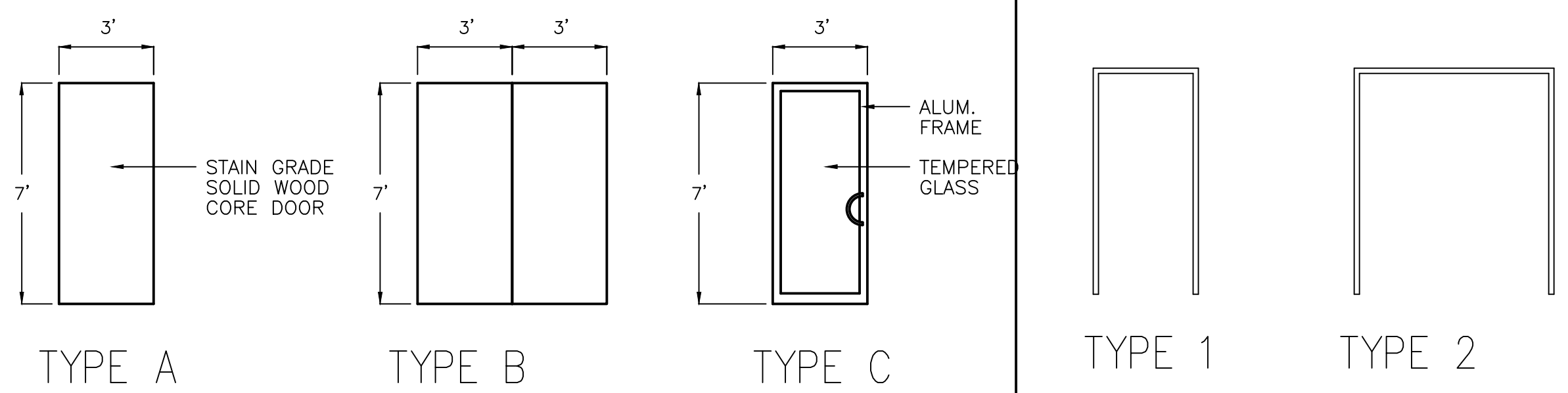
**A.2**

## DOOR SCHEDULE

NO.	SIZE	LOCATION	DOOR			FRAME			HARDWARE	LABEL	REMARKS
			MTRL	CORE	FINISH TYPE	MTRL.	FINISH TYPE				
E		EXISTING TO REMAIN AS-IS									
1	3 <sup>0</sup> x 7 <sup>0</sup>	VARIOUS	WOOD	SOLID	STAINED	A	H.M.	PAINTED	1	1	
2	3 <sup>0</sup> x 7 <sup>0</sup>	IT	WOOD	SOLID	STAINED	A	H.M.	PAINTED	1	2	
3	3 <sup>0</sup> x 7 <sup>0</sup>	VARIOUS	GLASS	SOLID	DURONOTIC	C	ALUM.	DURONOTIC	1	4	
4	3 <sup>0</sup> x 7 <sup>0</sup>	EXIT	GLASS	ALUM.	EXIST.	A	H.M.	PAINTED	1	3	
5	3 <sup>0</sup> x 7 <sup>0</sup>	VARIOUS	WOOD	SOLID	STAINED	A	H.M.	PAINTED	1	2	
6	3 <sup>0</sup> x 7 <sup>0</sup>	VARIOUS	WOOD	SOLID	STAINED	A	H.M.	PAINTED	1	5	
7	3 <sup>0</sup> x 7 <sup>0</sup>	TOILET ROOMS	WOOD	SOLID	STAINED	A	H.M.	PAINTED	1	6	
8	2-3 <sup>0</sup> x 7 <sup>0</sup>	ELECTRIC	WOOD	SOLID	STAINED	B	H.M.	PAINTED	2	7	
9	3 <sup>0</sup> x 7 <sup>0</sup>	ENTRY	GLASS	ALUM.	DURONOTIC	C	ALUM.	DURONOTIC	1	8	

- SET #1**  
 1-1/2 PR. HINGES  
 1 LEVERSET - PASSAGE  
 3 SILENCERS  
 1 DOOR STOP - FLOOR MTD.
- SET #2**  
 1-1/2 PR. HINGES  
 3 SILENCERS  
 1 LEVER SET - ELECTRONIC LATCH WITH ELECTRONIC STRIKE  
 1 CLOSER  
 1 DOOR STOP - FLOOR MTD.
- SET #3**  
 REPLACE CLOSER AND PANIC HARDWARE  
 REPLACE WEATHER STRIPPING  
 REPLACE KNOB WITH LEVERSET - PASSAGE
- SET #4**  
 1-1/2 PR. HINGES  
 3 SILENCERS  
 1 ELECTRONIC LATCH WITH ELECTRONIC STRIKE  
 1 CLOSER  
 1 PULL  
 1 PUSH BAR
- SET #5**  
 1-1/2 PR. HINGES  
 3 SILENCERS  
 1 LEVER SET - LOCKSET  
 1 CLOSER  
 1 DOOR STOP - FLOOR MTD.
- SET #6**  
 1-1/2 PR. HINGES  
 3 SILENCERS  
 1 LEVER SET - PRIVACY  
 1 DOOR STOP - FLOOR MTD.
- SET #7**  
 3 PR. HINGES  
 6 SILENCERS  
 2 DUMMY LEVER SETS  
 1 MTL ASTRAGAL
- SET #8**  
 1-1/2 PR. HINGES  
 1 PULL  
 1 PUSH BAR  
 1 CLOSER  
 1 CYLINDER LOCK (KEY/THUMBOLT)  
 1 THRESHOLD

NOTE:  
 1. ALL HARDWARE TO BE LEVER TYPE.  
 2. ALL KEYING AND ELECTRONIC STRIKES BY TENANT.



② DOOR TYPE

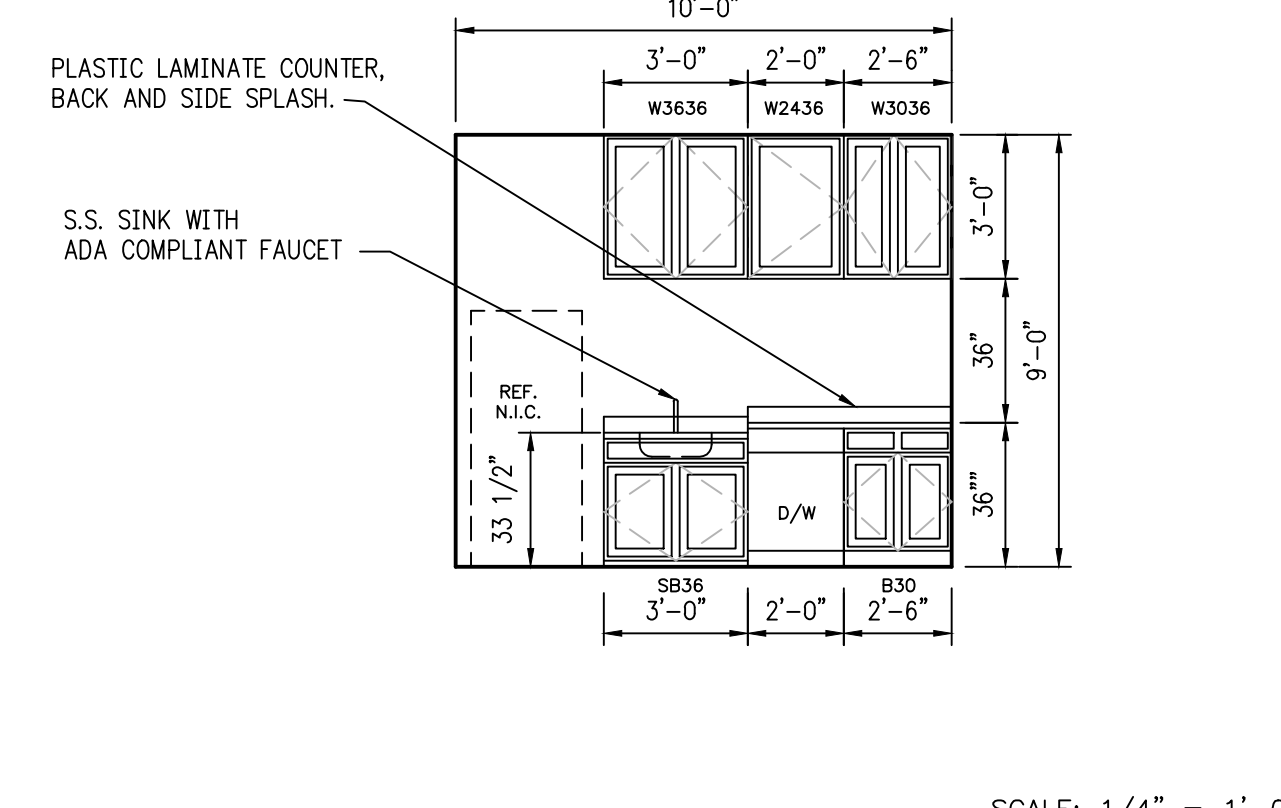
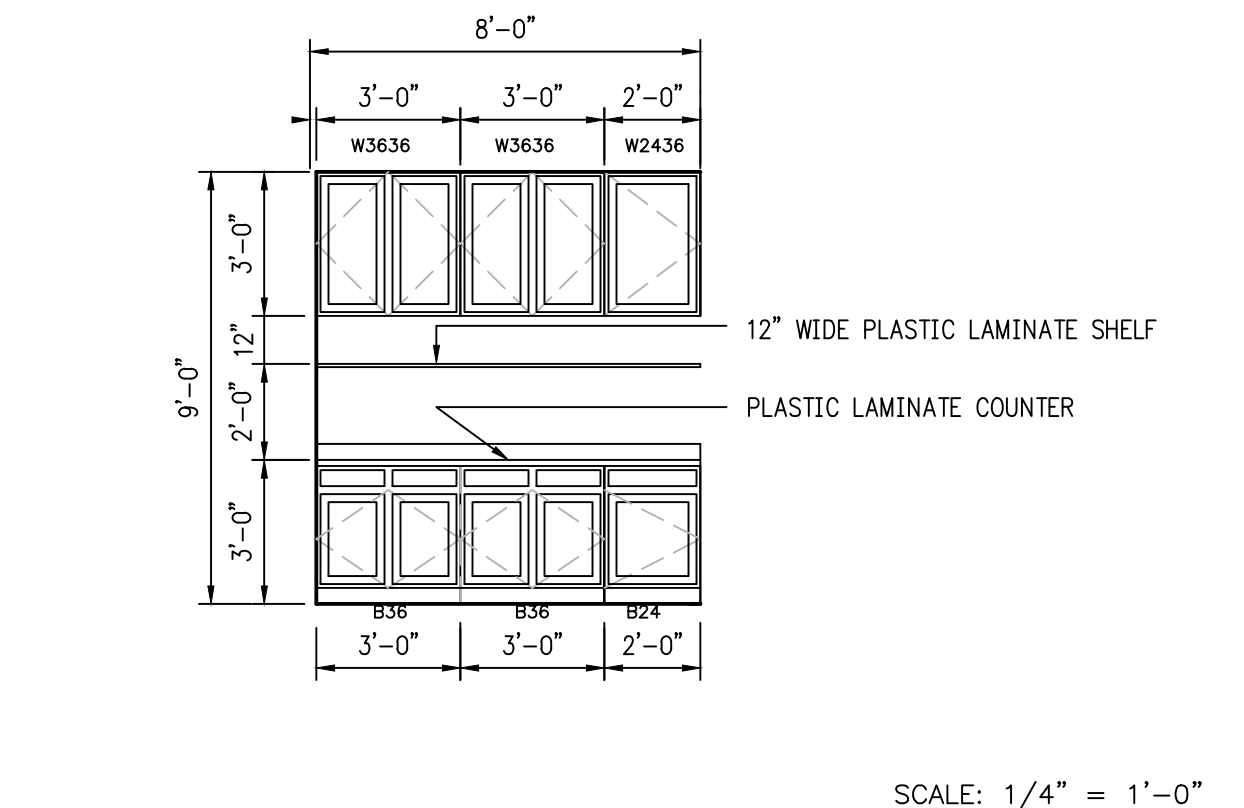
③ FRAME TYPE

④ HARDWARE

## FINISH SCHEDULE

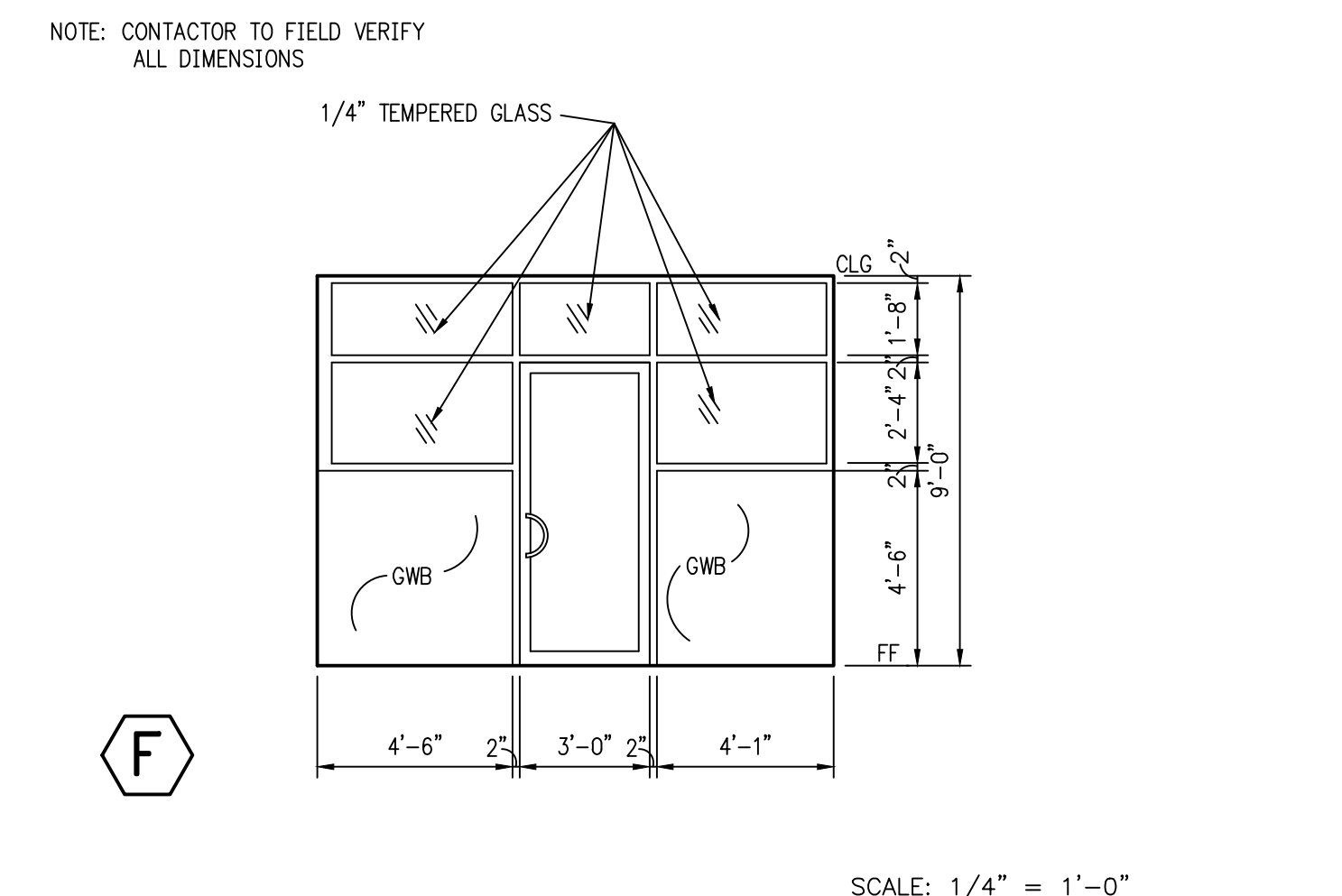
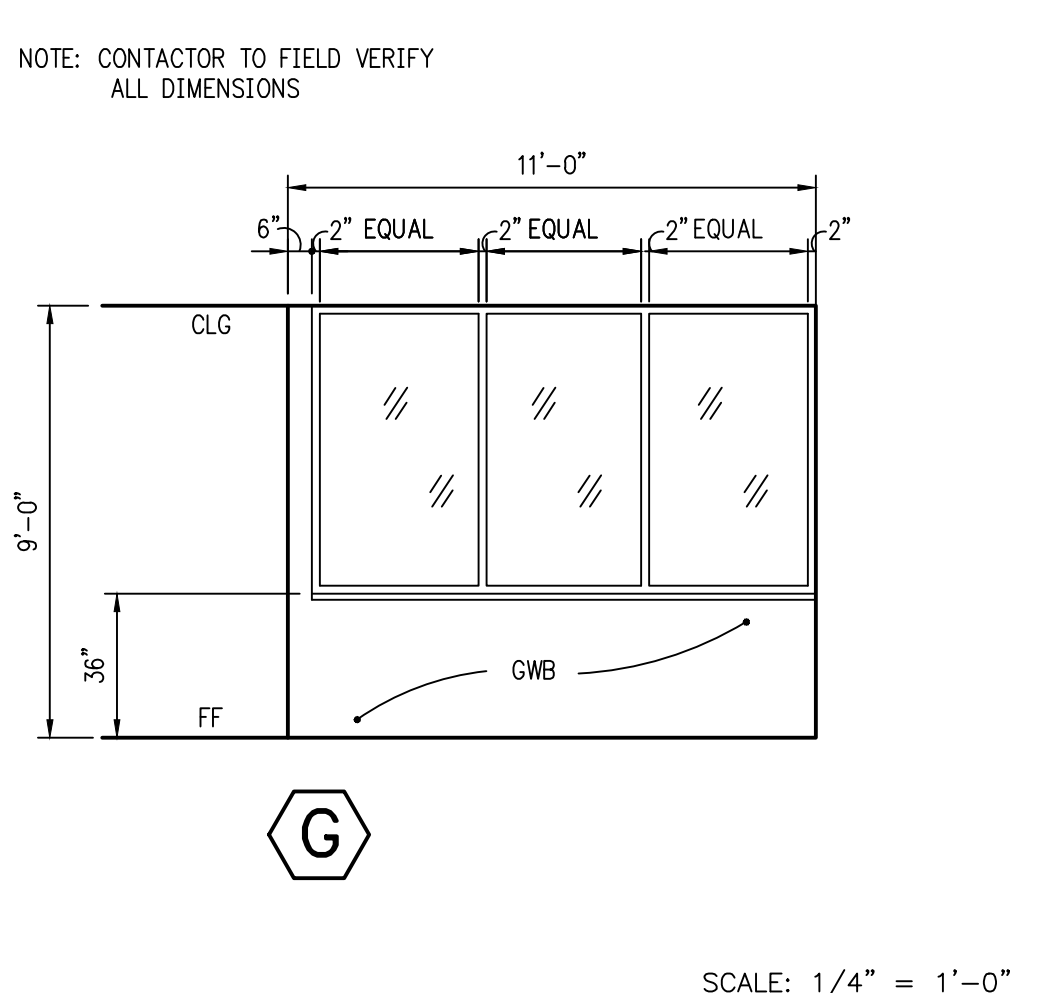
NO.	ROOM	AC.	FLOOR MTRL	BASE MTRL	NORTH WALL		EAST WALL		SOUTH WALL		WEST WALL		CEILING	
					MTRL	CLR	PMTRL	CLR	PMTRL	CLR	PMTRL	CLR	PMTRL	P
100	ENTRY		ENTRY MAT	VB	GLASS					GLASS			ACT	9'-0"
101	RECEPTION		CARPET	CARP	GWB					GWB				
102	COPY/FAX													
103	CORRIDOR													
104	CONFERENCE													
105	OFFICE													
106	OFFICE													
107	OFFICE													
108	OFFICE													
109	OPEN OFFICE		CARPET	CARP										
110	IT		VCT	VB	GWB					GWB				9'-0"
111	ELECT.		EXIST.		EXIST.					EXIST.				EXIST.
112	CLOSET		CARPET	CARP	GWB					GWB				9'-0"
113	QUEING													
114	MGR. OFFICE				GLASS					GWB				
115	CSR				GLASS					GLASS				
116	TELLERS				GLASS					GLASS				
117	COUNTING ROOM				GLASS					GLASS				
118	CSR				GLASS					GLASS				
119	CSR				GLASS					GLASS				
120	CONFERENCE		CARP	CARP	GLASS					GLASS				
121	BREAK ROOM		VCT	VB						GWB				
122	COAT CLOSET		VCT	VB										
123	ELECTRICAL													
124	KITCHEN		VCT	VB										
125	CORRIDOR		CARP	CARP										
126	MENS T.R.		VCT	VB										
127	WOMENS T.R.		VCT	VB										
128	SUPPLIES		VCT	VB						GWB			ACT	9'-0"

NOTE:  
 1. GLASS PANELS TO RECEIVE 1" MINI BLINDS.



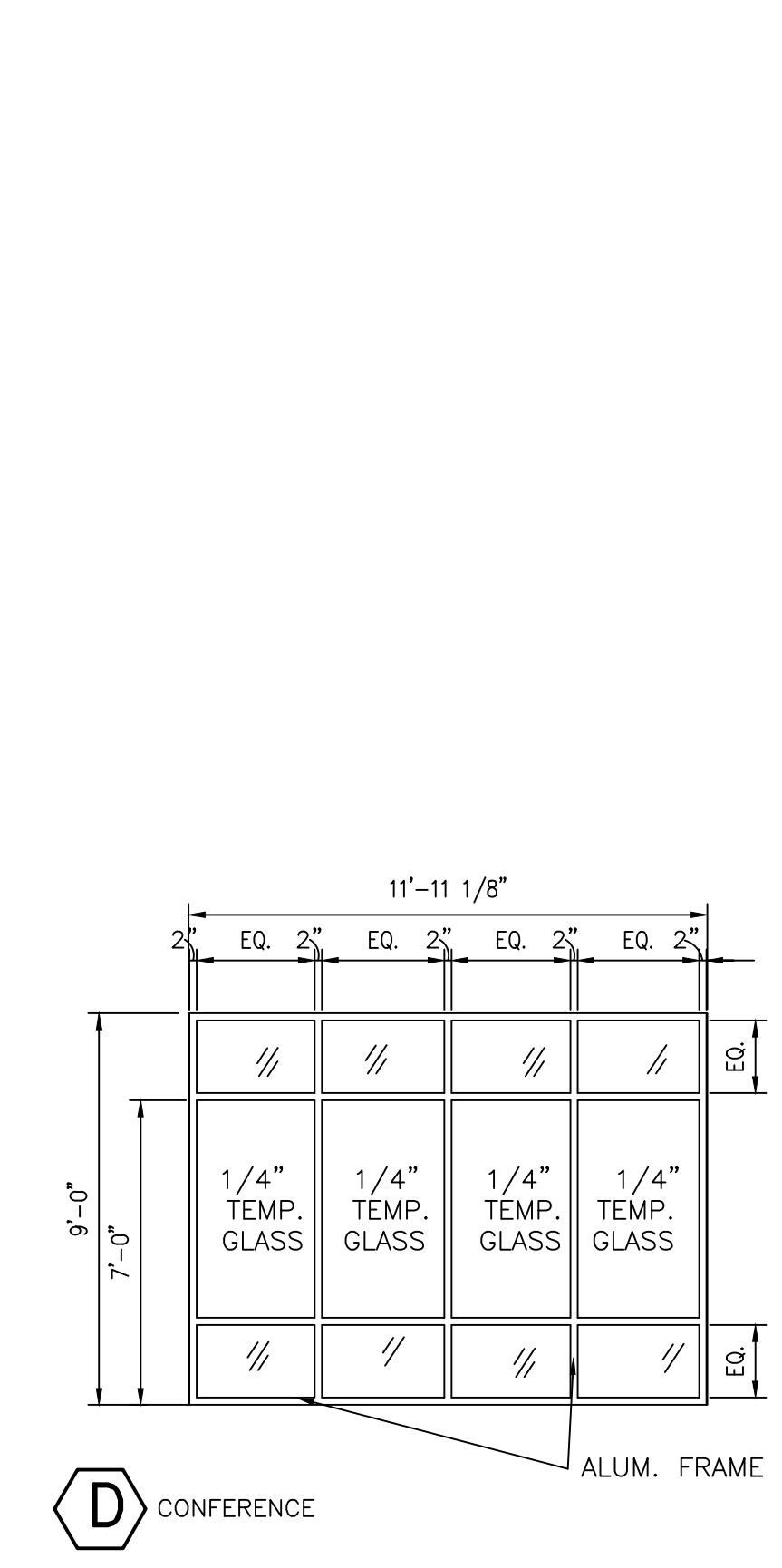
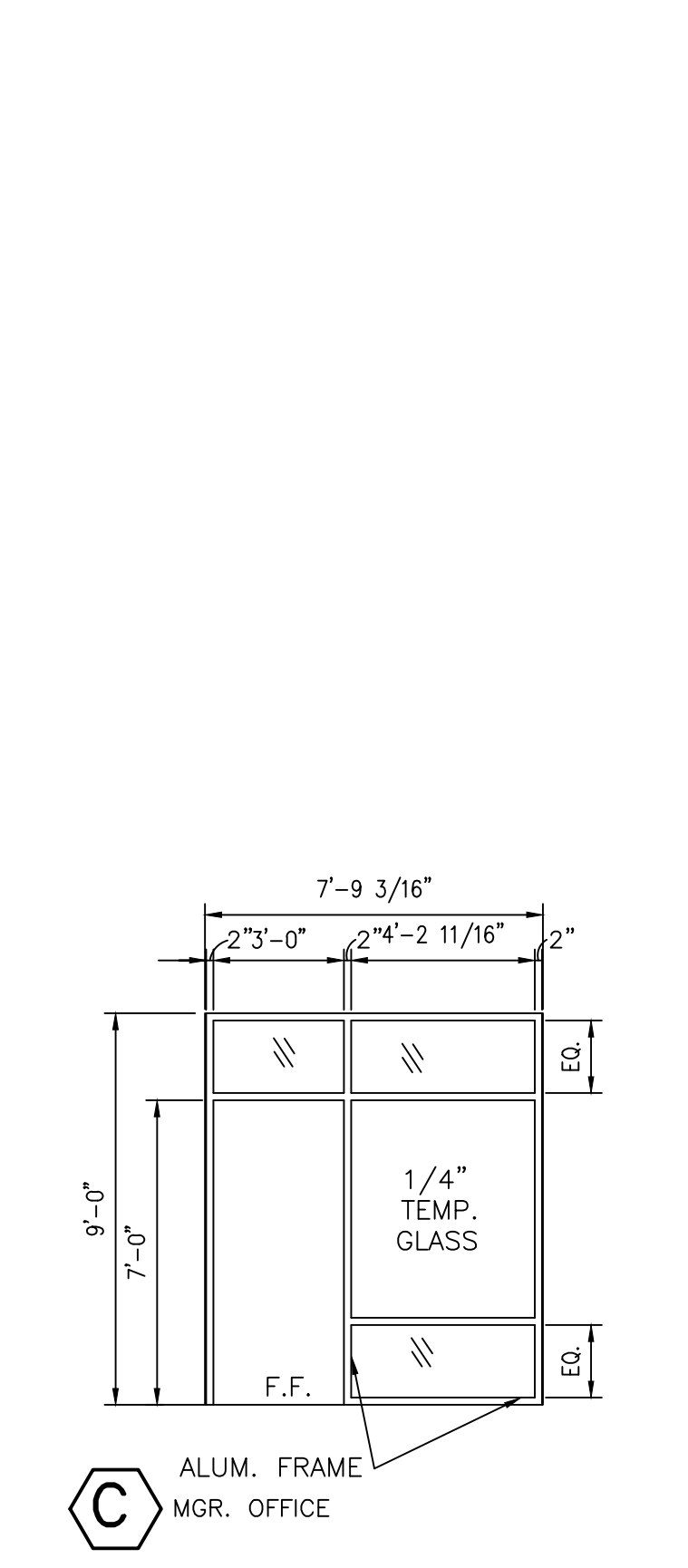
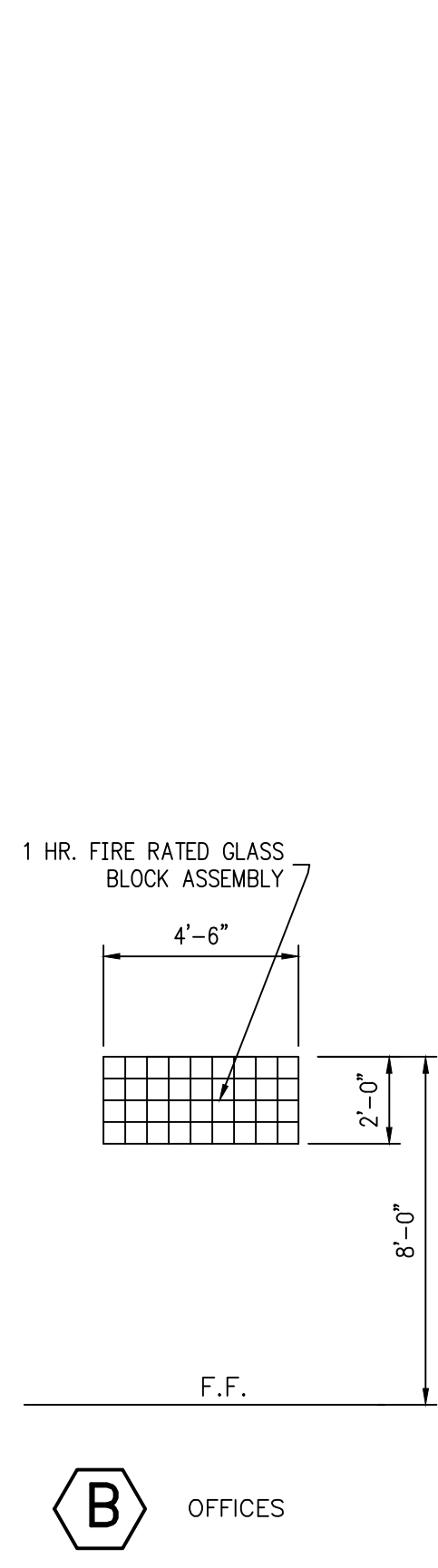
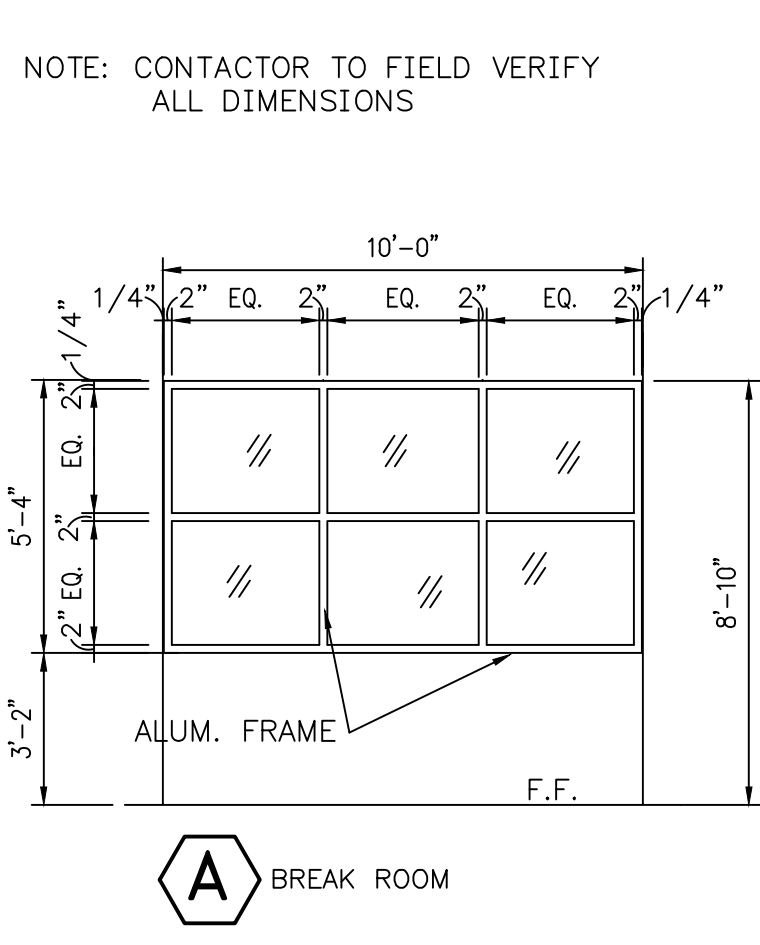
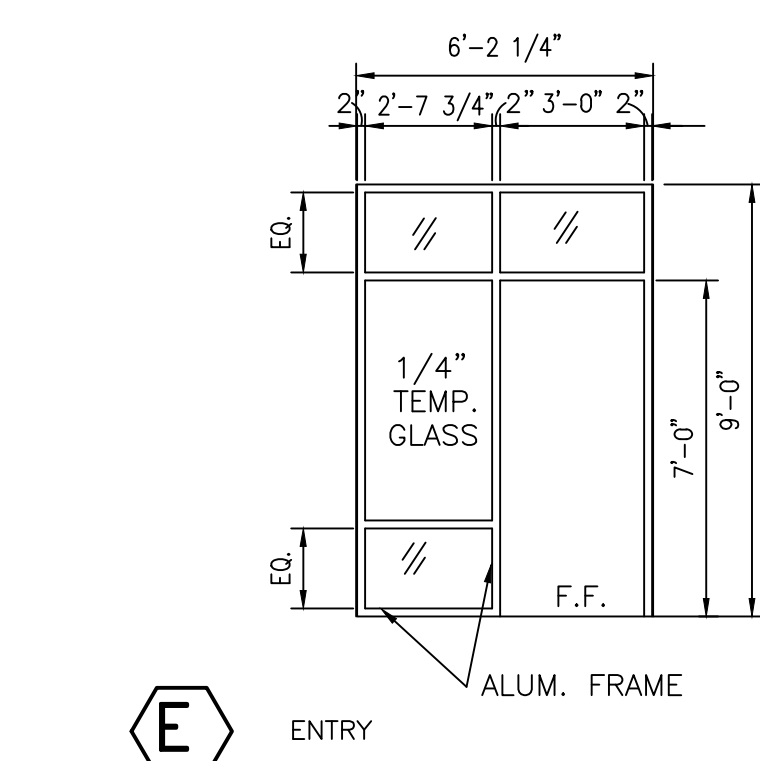
⑤ COPY/FAX CABINETRY ELEVATION

⑥ KITCHEN CABINETRY ELEVATIONS



⑧ CSR PARTITION ELEVATION

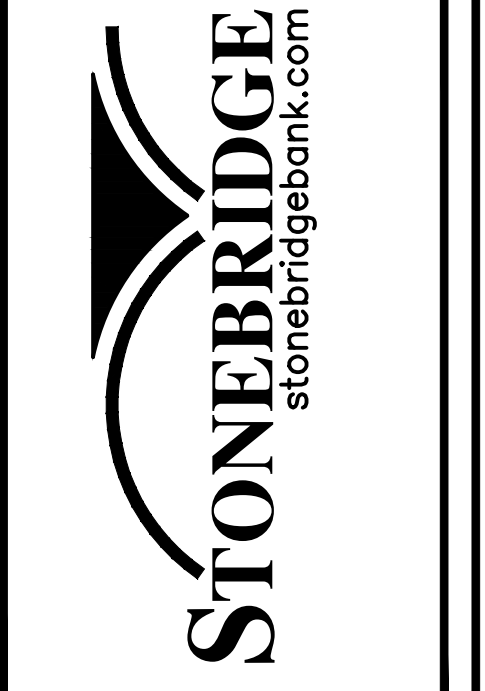
⑨ TELLER PARTITION ELEVATION



⑦ GLASS ELEVATIONS

**ARCHITECTURAL SERVICES**  
 RESIDENTIAL AND COMMERCIAL  
 DESIGN AND CONSTRUCTION  
 610.532.3722  
 411 SYCAMORE AVENUE • FOLSOM • PENNSYLVANIA

**PROPOSED LOANS/LENDING OPERATION**  
 BUCKS COUNTY BRANCH  
 315 EAST STREET ROAD  
 WARMINSTER TOWNSHIP, BUCKS COUNTY, PENNSYLVANIA

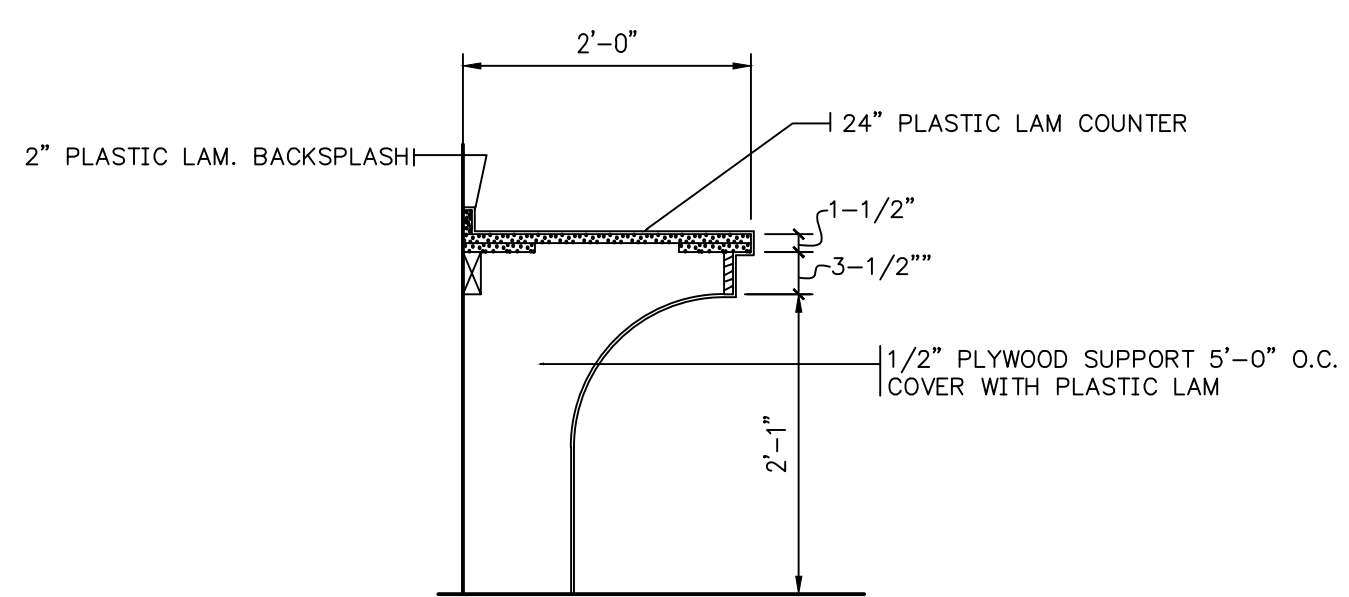


DATE: 22 AUG 05	REVISIONS

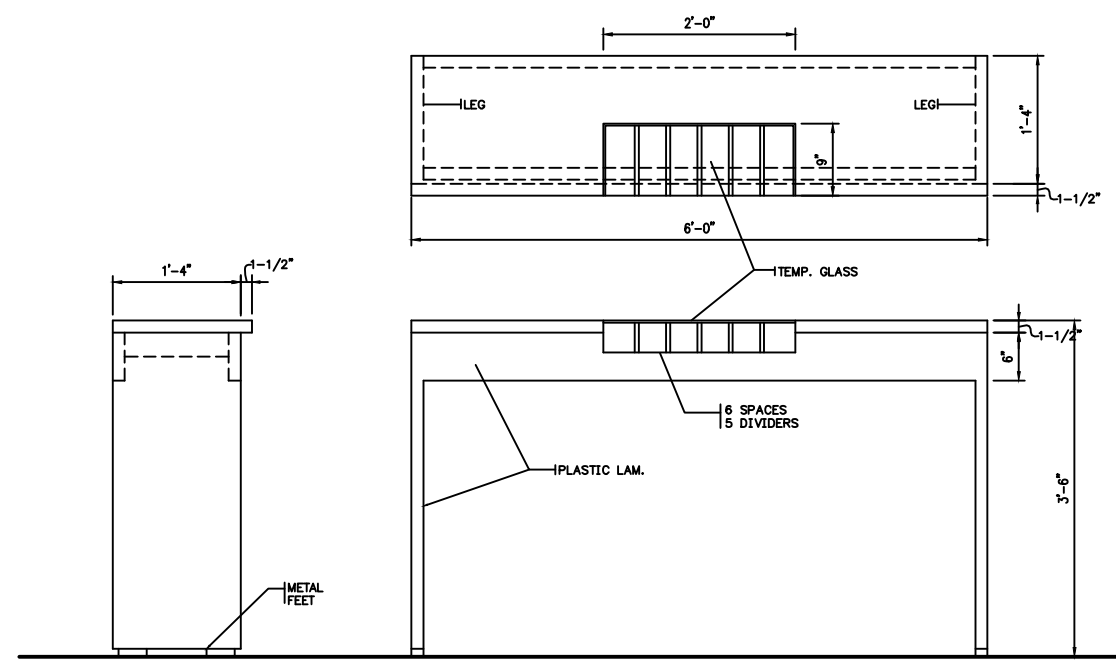
A-3

STONEBRIDGE BANK/BUCKS COUNTY/ 3-17-05

SCALE: 1/4" = 1'-0"



NTS



NTS

② SECTION AT COUNTER (COUNTING ROOM)

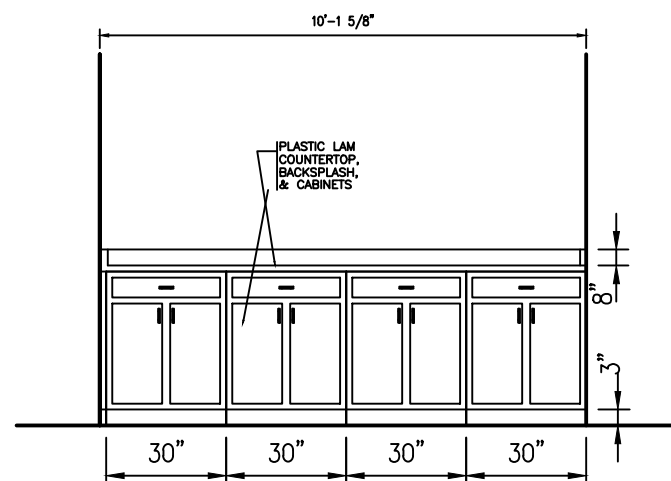
③ WRITING DESK

- CHAIR A - GUEST CHAIR WITH ARMS - FABRIC (23 REQUIRED)
- CHAIR B - SECRETARIAL CHAIR WITHOUT ARMS, SWIVEL/CASTERS - FABRIC (3 REQUIRED)
- CHAIR C - CONFERENCE ROOM CHAIR WITH ARMS, SWIVEL/CASTERS - FABRIC (12 REQUIRED)
- CHAIR D - DESK CHAIR WITH ARMS, SWIVEL/CASTERS - FABRIC (8 REQUIRED)
- CHAIR E - STACKABLE PLASTIC SEAT (8 REQUIRED)
- STOOLS - ADJUSTABLE STOOLS WITH BACKS, SWIVELS AND CASTERS, WITHOUT ARMS AND FOOTRESTS, WITH FABRIC FINISH.

- DESK 1 - WOOD VENEER DESK WITH RETURN, KEY BOARD SHELF, MOUSE HOLE AND PEDESTAL
- CRENZNA 2 - TO MATCH DESK 1 WITH TWO FILE DRAWERS AND ONE COMPARTMENT

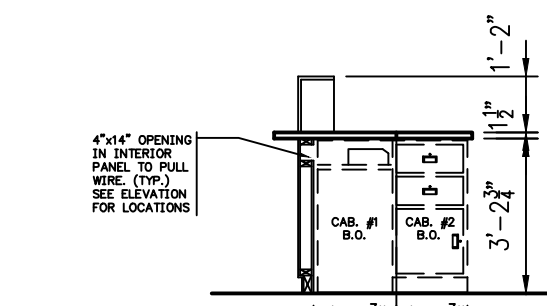
- TABLE 3 - WOOD BOAT SHAPED CONFERENCE TABLE 8'-0"
- TABLE 4 - WOOD OVAL CONFERENCE TABLE, TWO 'T' LEGS SUPPORT 12'-0"
- FILE 5 - 36" LONG WITH LAMINATE COUNTER TOP ( 2 DRAWER)

- WORK STATIONS -
- TWO OVERHEAD FLIP TOP FILE
- TWO RETURN WORK SURFACES
- TWO PEDESTALS
- ONE 45° CENTER WORK SURFACE
- KEY BOARD SHELF
- MOUSE HOLE



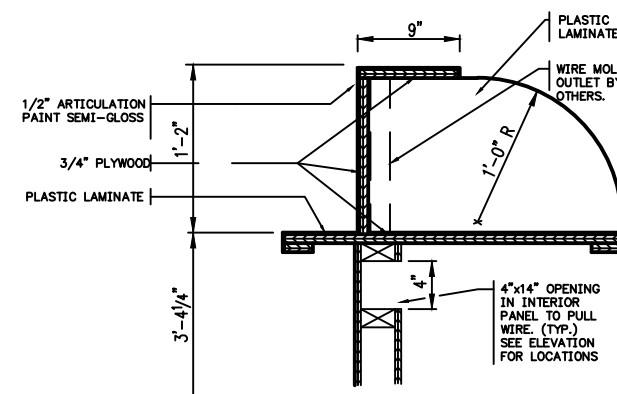
ELEVATION 'C'

SCALE: 1/4" = 1'-0"



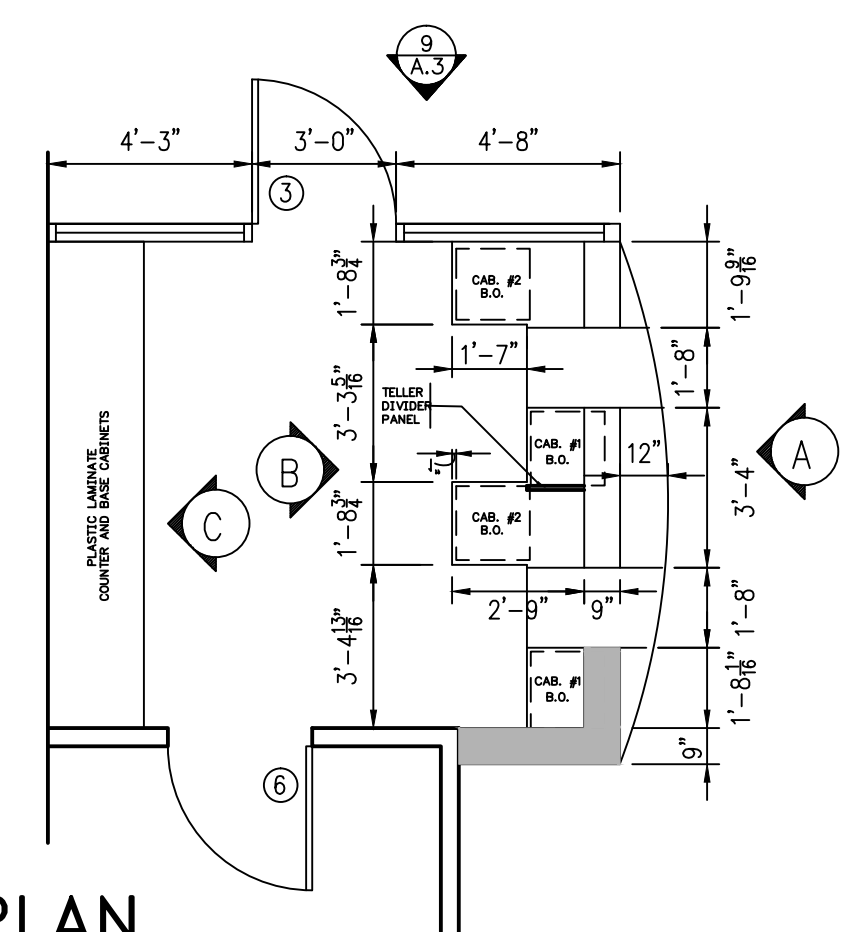
TYP. SECTION

SCALE: 1/4" = 1'-0"



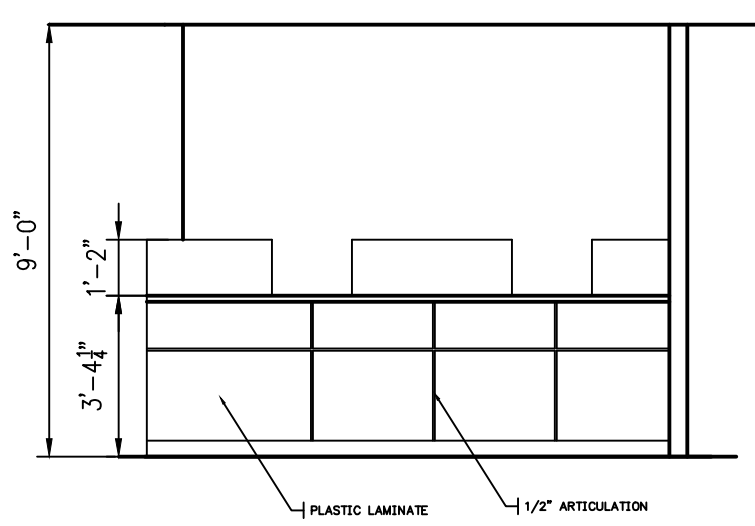
TELLER DIVIDER

NTS



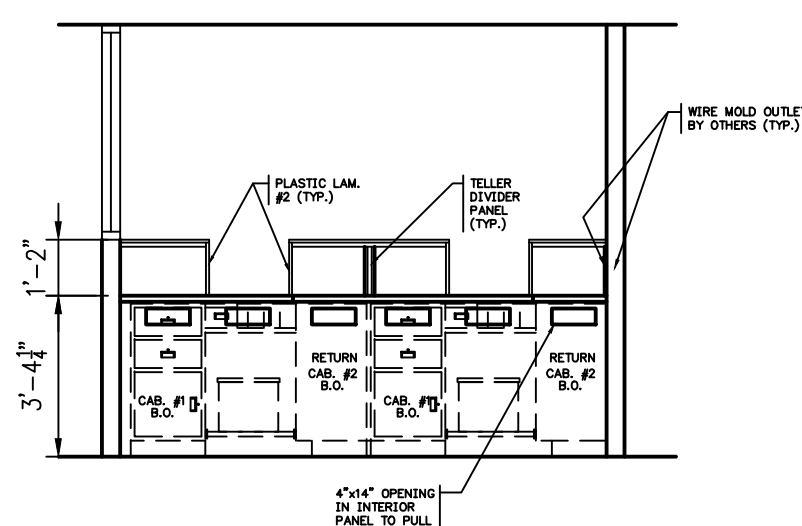
PLAN

SCALE: 1/4" = 1'-0"



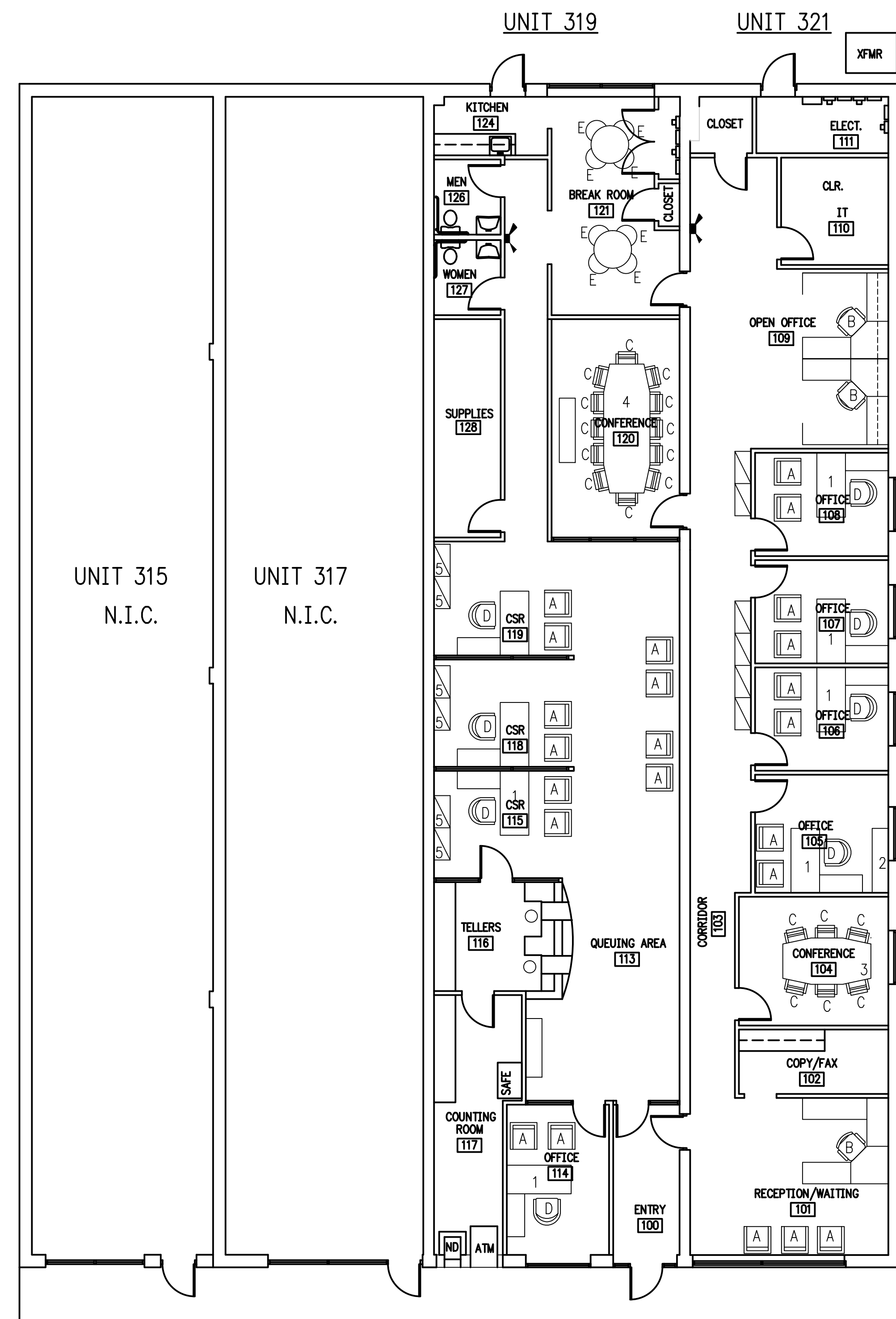
ELEVATION 'A'

SCALE: 1/4" = 1'-0"



ELEVATION 'B'

SCALE: 1/4" = 1'-0"



④ FURNITURE PLAN

**ARCHITECTURAL SERVICES**  
RESIDENTIAL AND COMMERCIAL  
DESIGN AND CONSTRUCTION

610.532.3722  
411 SYCAMORE AVENUE • FOLSOM • PENNSYLVANIA

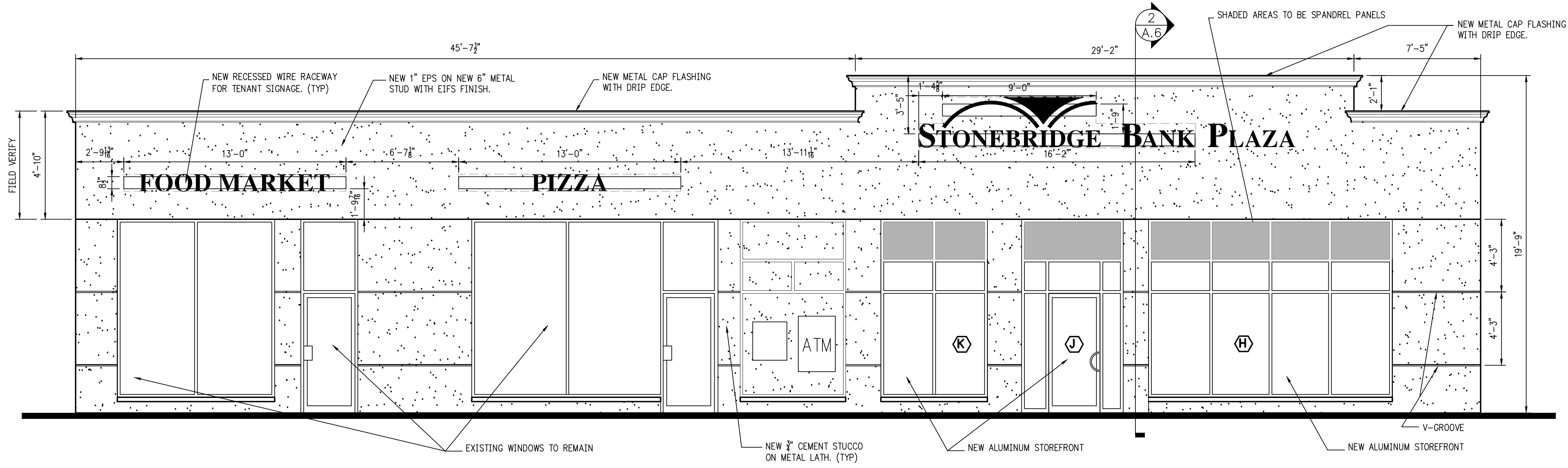
PROPOSED LOANS/LENDING OPERATION  
BUCKS COUNTY BRANCH  
315 EAST STREET ROAD  
WARMINSTER TOWNSHIP, BUCKS COUNTY, PENNSYLVANIA



DATE: 22 AUG 05	REVISIONS

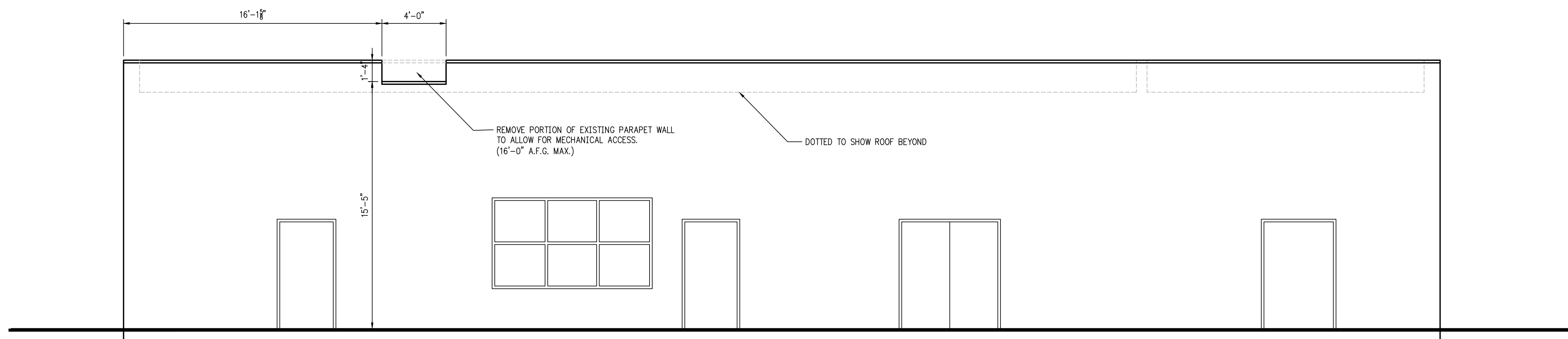
**A.4**

STONEBRIDGE BANK/BUCKS COUNTY/ 3-17-05



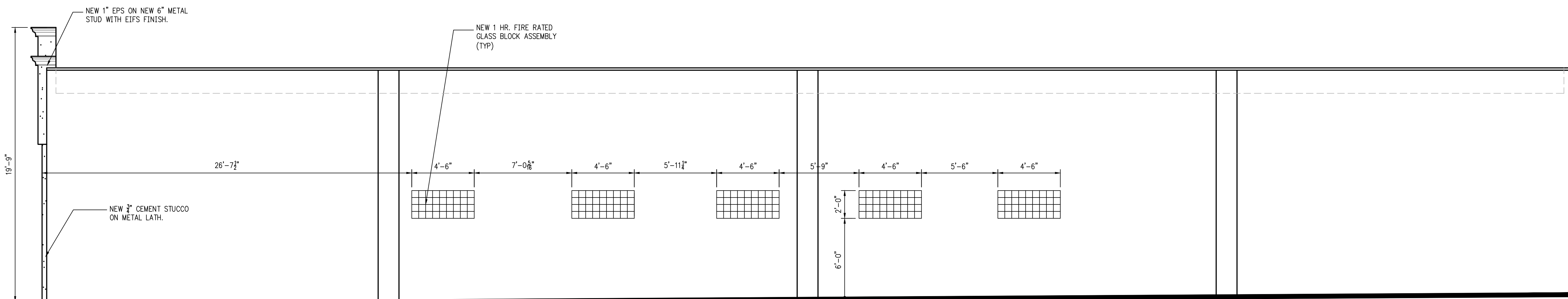
3 PROPOSED FRONT ELEVATION

SCALE: 1/4" = 1'-0"



2 PROPOSED REAR ELEVATION

SCALE: 1/4" = 1'-0"



1 SIDE ELEVATION

SCALE: 1/4" = 1'-0"

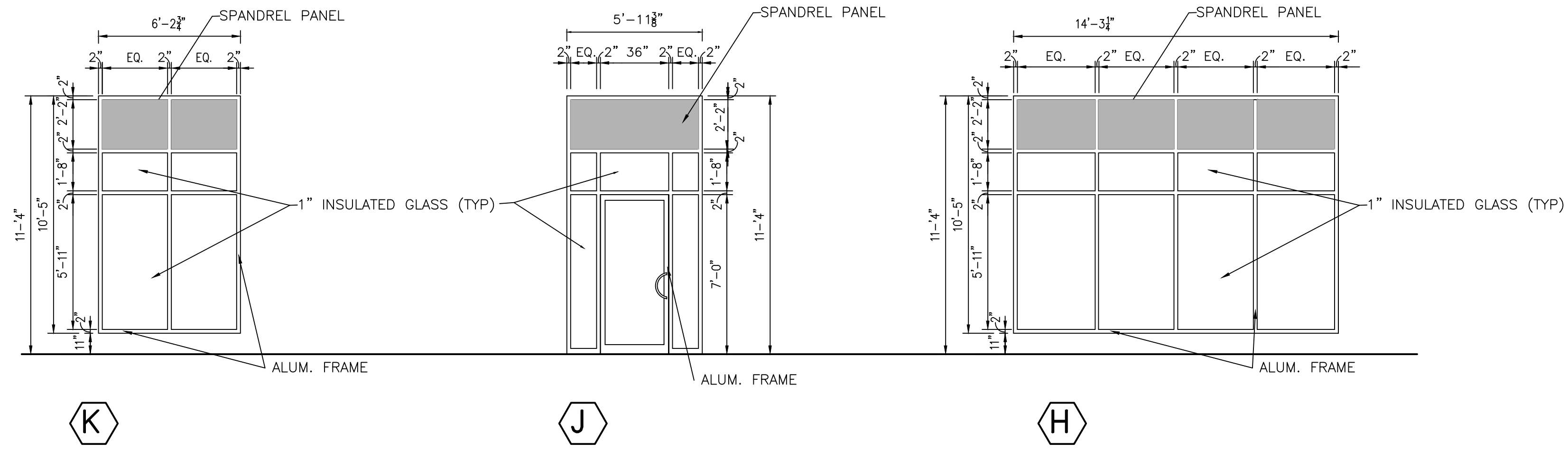
PROPOSED LOANS/LENDING OPERATION  
BUCKS COUNTY BRANCH  
315 EAST STREET ROAD  
WARMINSTER TOWNSHIP, BUCKS COUNTY, PENNSYLVANIA



DATE	REVISIONS
22 AUG. 05	
29 NOV. 05	1

**RHJ**  
ASSOCIATES  
610-337-4555  
1000 NINTH AVE. KING OF PRUSSIA, PA 19406

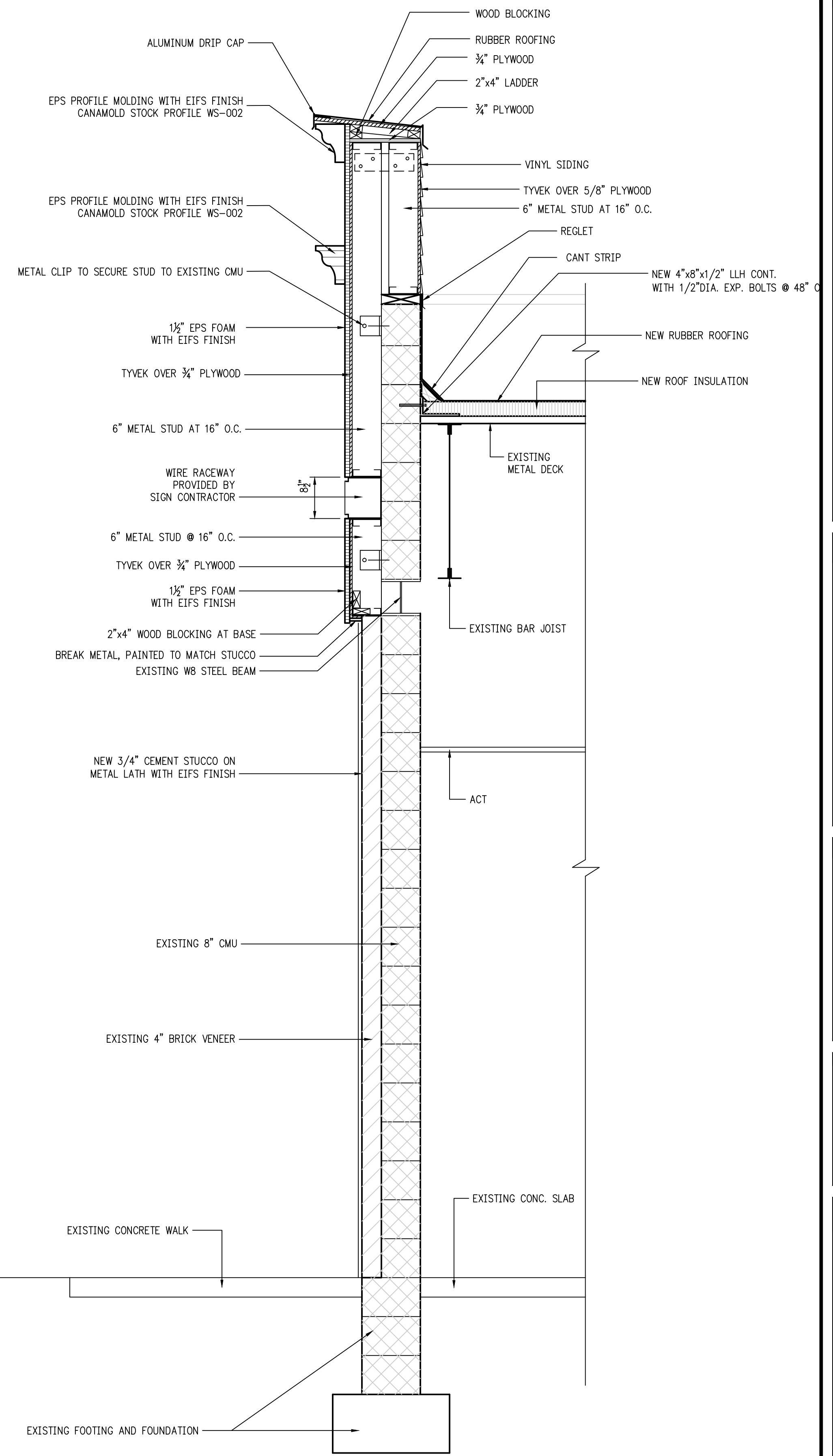
**A-5**



NOTE:  
 1. ALL GLAZING TO BE 1" CLEAR WITH LOW 'E'  
 2. ALL GLAZING IN DOORS TO BE 1/4" CLEAR.  
 3. ALL STOREFRONT FRAMING TO BE BRONZE

1 GLASS ELEVATIONS

SCALE: 1/4" = 1'-0"



2 SECTION

SCALE: 3/4" = 1'-0"

PROPOSED LOANS/LENDING OPERATION  
 BUCKS COUNTY BRANCH  
 315 EAST STREET ROAD  
 WARMINSTER TOWNSHIP, BUCKS COUNTY, PENNSYLVANIA

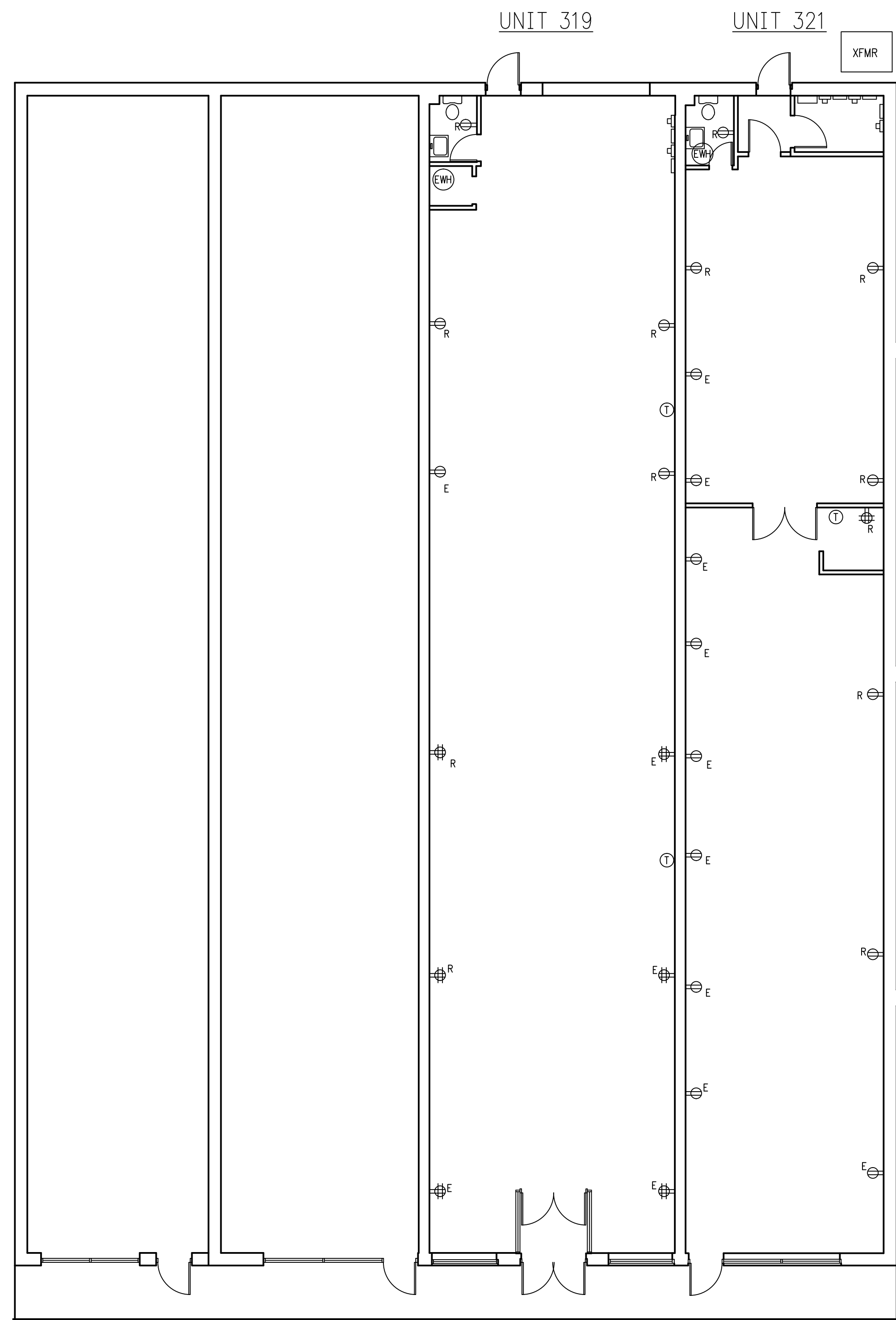


DATE	REVISIONS
22 AUG. 05	1
28 NOV 05	

**RHJ**  
 ASSOCIATES  
 610-337-4555  
 1000 NINTH AVE. KING OF PRUSSIA, PA 19406

**A.6**

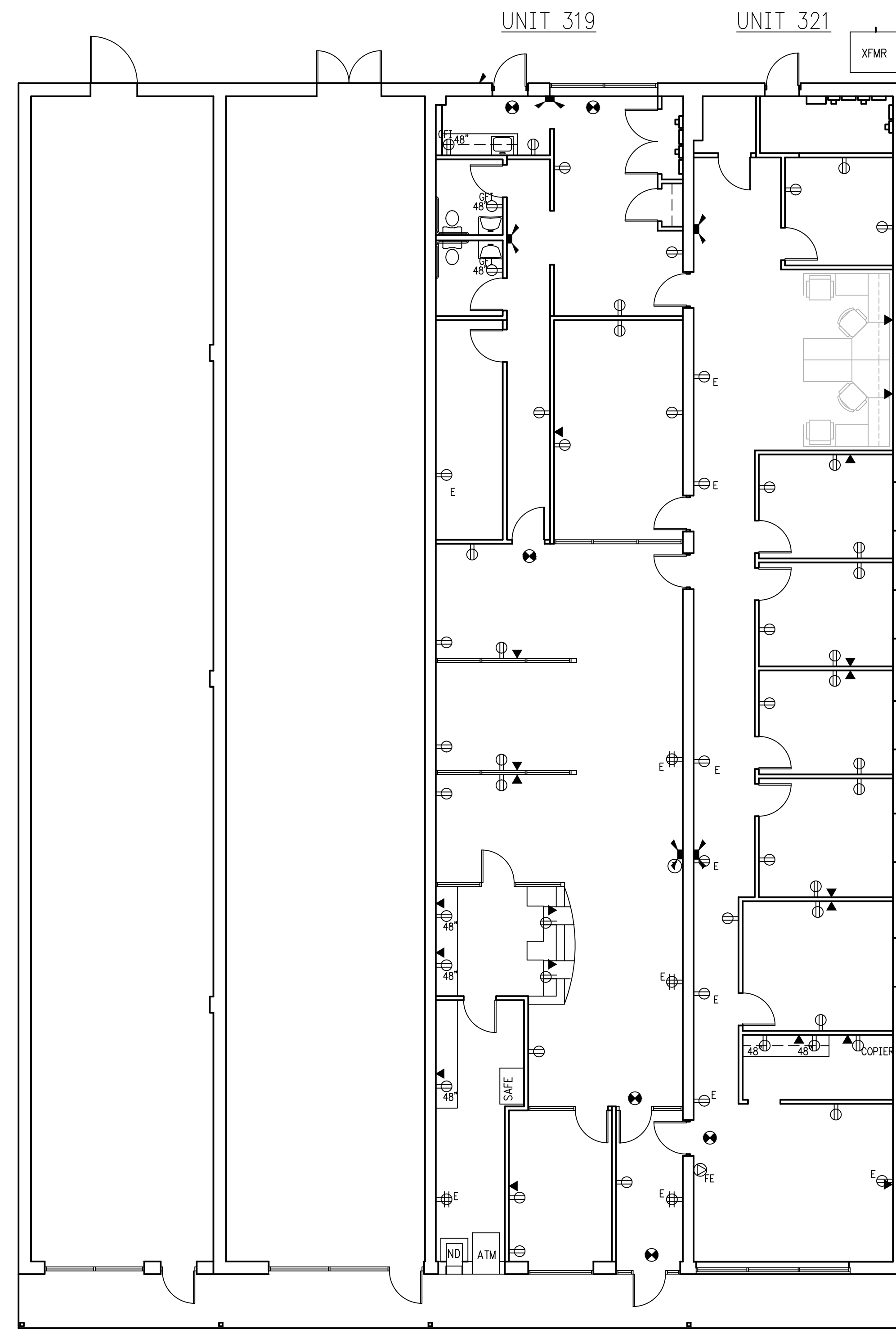




SYMBOLS LEGEND	
⊕ E	EXISTING DUPLEX RECEPTACLE TO REMAIN
⊕ R	EXISTING DUPLEX RECEPTACLE TO BE REMOVED
⊕ E	EXISTING QUAD RECEPTACLE TO REMAIN
⊕ R	EXISTING QUAD RECEPTACLE TO BE REMOVED

1 EXISTING FLOOR PLAN - POWER

SCALE: 1/8" = 1'-0"



SYMBOLS LEGEND			
⊕	NEW DUPLEX RECEPTACLE	⊕ E	EXISTING DUPLEX RECEPTACLE TO REMAIN
⊕ 48"	NEW DUPLEX RECEPTACLE, MOUNTED 48" A.F.F.	⊕ E	EXISTING QUAD RECEPTACLE TO REMAIN
⊕ GF1	NEW GF1 DUPLEX RECEPTACLE	▲	FOUR GANG TEL/DATA JACK BY TENANT (VOICE AND DATA WIRING BY TENANT)

2 NEW FLOOR PLAN - POWER

SCALE: 1/8" = 1'-0"

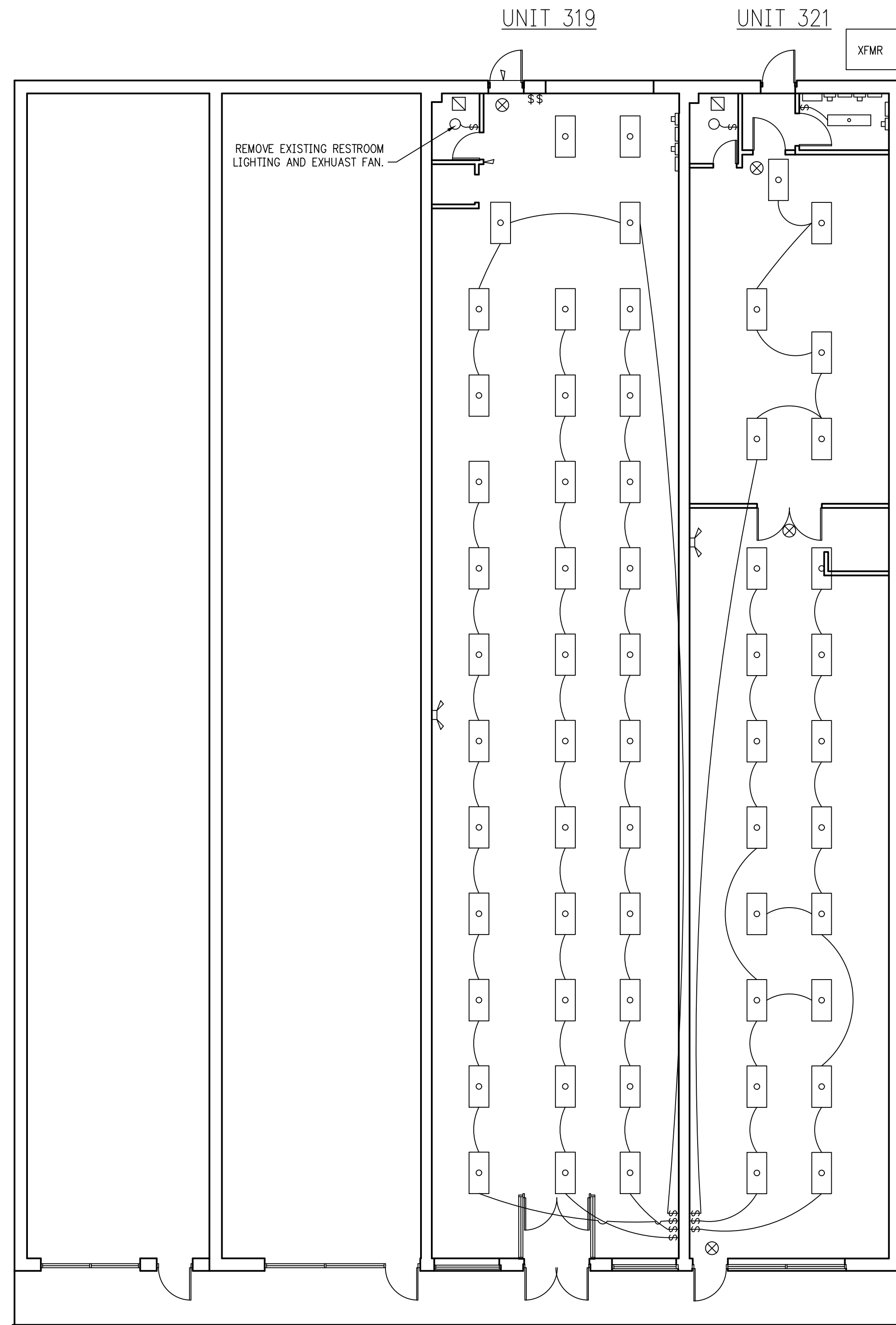
DATE: 22 AUG 05	REVISIONS



PROPOSED LOANS/LENDING OPERATION  
 BUCKS COUNTY BRANCH  
 315 EAST STREET ROAD  
 WARMINSTER TOWNSHIP, BUCKS COUNTY, PENNSYLVANIA

ARCHITECTURAL SERVICES  
 RESIDENTIAL AND COMMERCIAL  
 DESIGN AND CONSTRUCTION  
 411 SYCAMORE AVENUE • FOLSOM • PENNSYLVANIA  
 610.532.3722

**E.1**



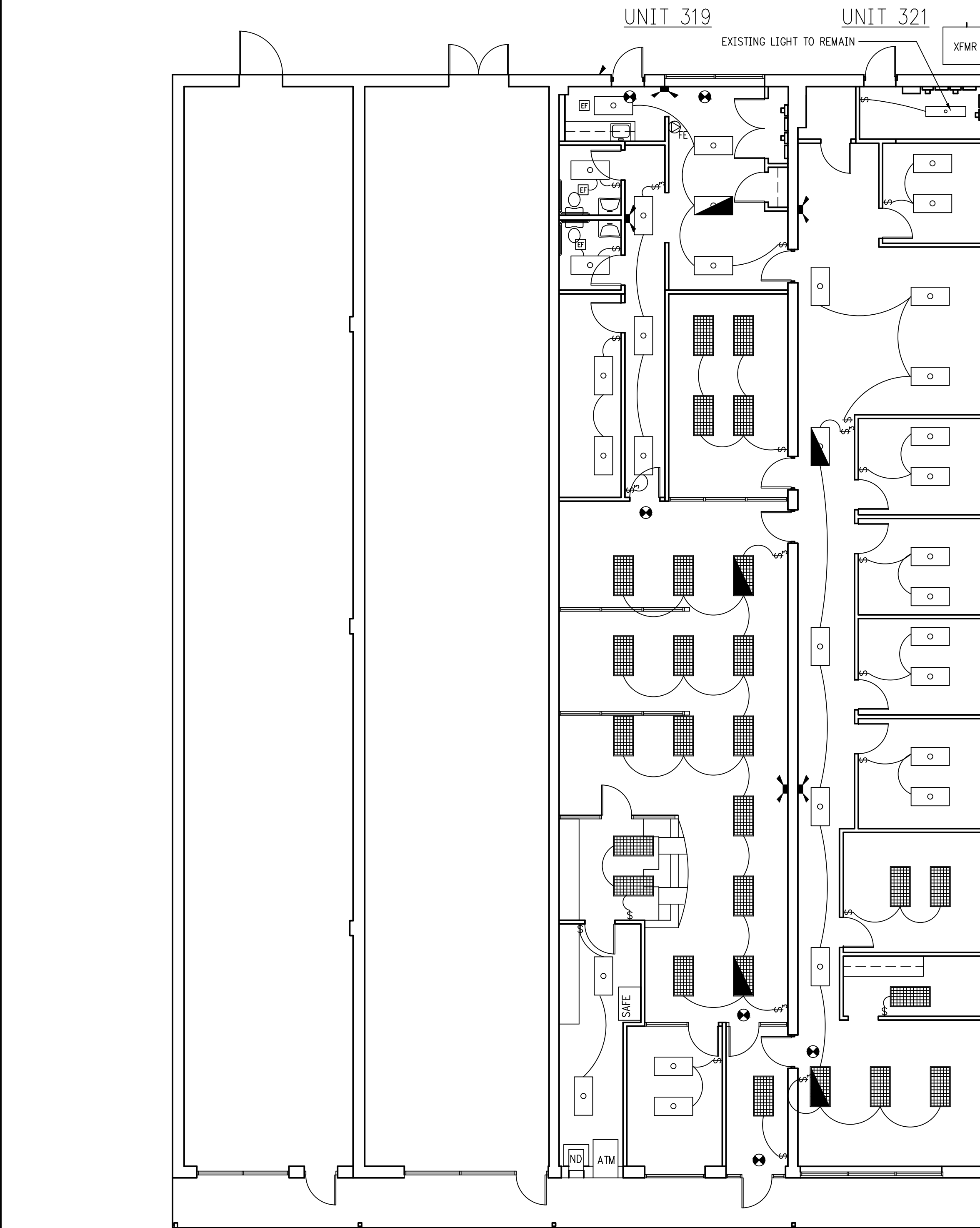
**DEMOLITION NOTES:**

1. CONTRACTOR TO REMOVE LIGHTING AND ASSOCIATED WIRING, SWITCHES AND RECEPTACLES UNLESS NOTED.
2. CONTRACTOR TO REMOVE ALL EXISTING FLOURESCENT LIGHTING AND STORE FOR REUSE FOR THIS PROJECT.
3. ALL EXISTING FLOURESCENT LIGHTING FIXTURES TO BE REUSED ARE TO BE CLEANED, RELAMPED AND RELENSED.
4. CONTRACTOR TO VERIFY THAT ALL EXTERIOR LIGHTING FIXTURES ARE IN GOOD WORKING ORDER. REPLACE/REPAIR DAMAGED FITURES, BULBS AND LENSES AS REQUIRED.
5. EXISTING ELECTRIC WATER HEATER (EWC) IN UNIT 319 TO BE SAVE FOR REUSE.
6. REMOVE ALL EXISTING VOICE AND DATA WIRING TO EXISTING D-MARC.

ELECTRICAL TO BE DESIGN/BUILD.  
CONTRACTOR TO DETERMINE EXACT LOCATIONS FOR ALL ELECTRICAL FIXTURES, DEVICES AND EQUIPMENT FOR A COMPLETE JOB. CONTRACTOR TO SUPPLY ALL ELECTRICAL ENGINEERING. WORK IS TO CONFORM TO NEC AND ALL OTHER APPLICABLE CODES & STANDARDS.

**SYMBOLS LEGEND**

- EXISTING 2'x4' FLOURESCENT LIGHT WITH PRISMATIC LENSE TO BE REMOVED, CLEAN FOR REUSE.
- EXISTING 1'x4' FLOURESCENT LIGHT WITH PRISMATIC LENSE TO REMAIN.
- ⊗ EXISTING ILLUMINATED EXIT SIGN TO BE REMOVED
- ⚡ EXISTING EMERGENCY LIGHTING WITH BATTERY BACKUP TO BE REMOVED
- ⌘ EXISTING SWITCH TO BE REMOVED.



**SYMBOLS LEGEND**

- 2'x4' FLOURESCENT LIGHT WITH PRISMATIC LENSE
- ⊗ NEW ILLUMINATED EXIT SIGN
- ⚡ NEW EMERGENCY LIGHTING WITH BATTERY BACKUP
- ⌘ EXIST. FLOURESCENT LIGHT TO REMAIN
- ⌘ NEW SINGLE POLE SWITCH
- ⌘ NEW 2'x4' (1-1/2") CELL SILVER PARABOLIC FIXTURES WITH ELECTRONIC BALLASTS AND 3-T8 LAMPS.
- ⊗ NEW EMERGENCY LIGHTING WITH BATTERY BACKUP
- ⌘ NEW EMERGENCY LIGHTING REMOTE HEAD
- ⌘ NEW THREE WAY SWITCH

1 EXISTING FLOOR PLAN - LIGHTING

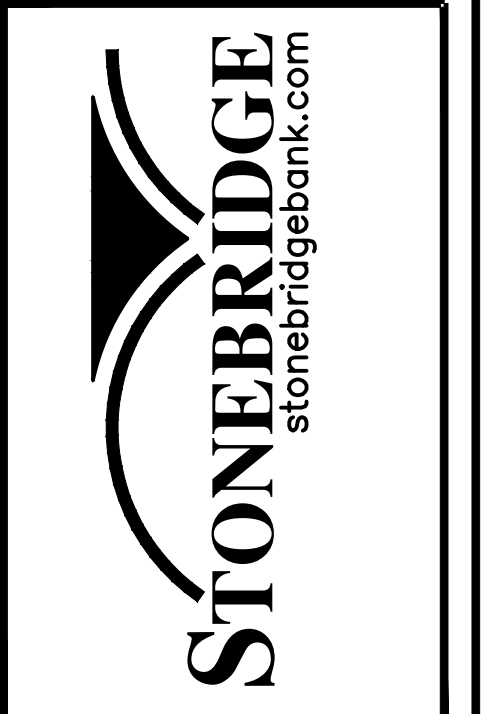
SCALE: 1/8" = 1'-0"

2 NEW FLOOR PLAN - LIGHTING

SCALE: 1/8" = 1'-0"

**ARCHITECTURAL SERVICES**  
RESIDENTIAL AND COMMERCIAL  
DESIGN AND CONSTRUCTION  
610.532.3722  
411 SYCAMORE AVENUE • FOLSOM • PENNSYLVANIA

PROPOSED LOANS/LENDING OPERATION  
BUCKS COUNTY BRANCH  
315 EAST STREET ROAD  
WARMINSTER TOWNSHIP, BUCKS COUNTY, PENNSYLVANIA



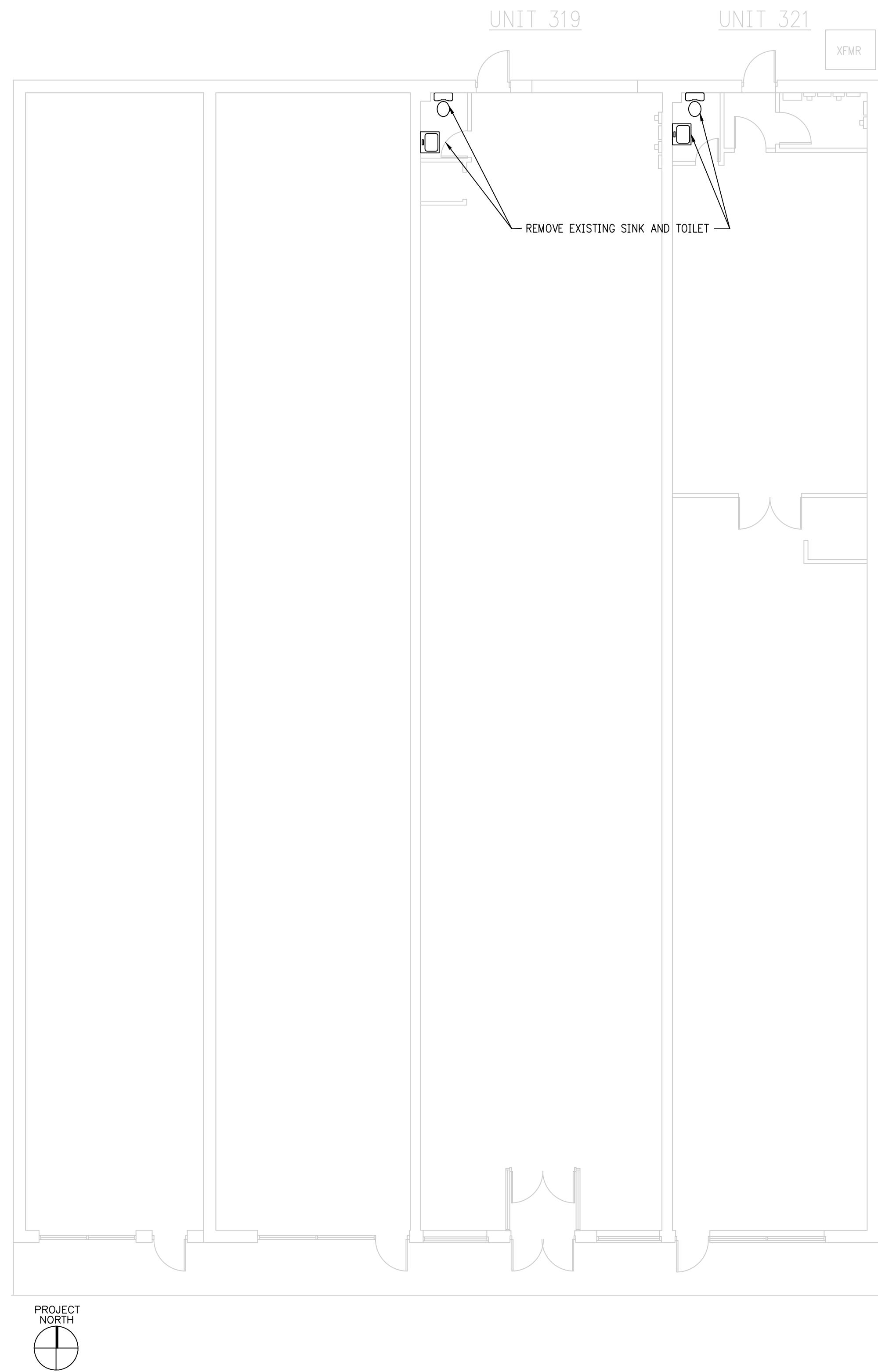
DATE: 22 AUG. 05

REVISIONS		

**E.2**

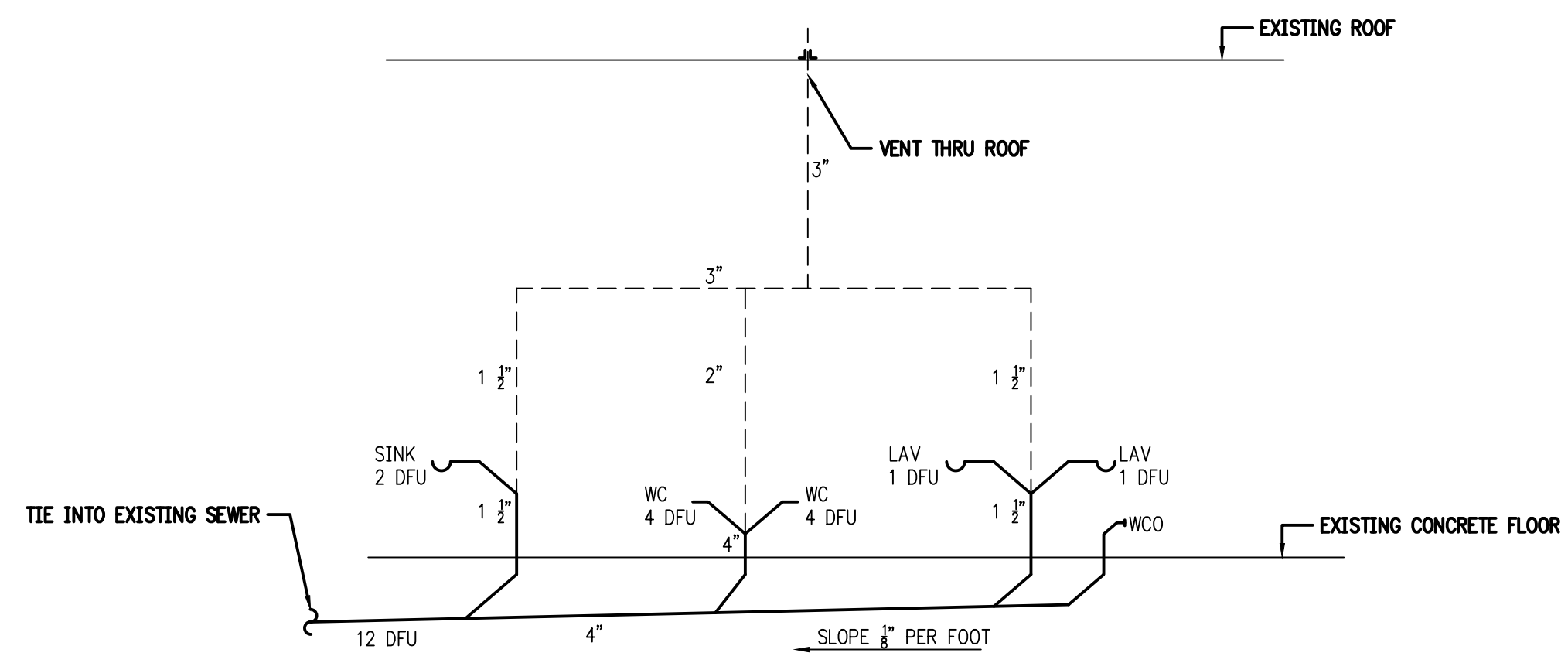


STONEBRIDGE BANK/BUCKS COUNTY/ 3-17-05



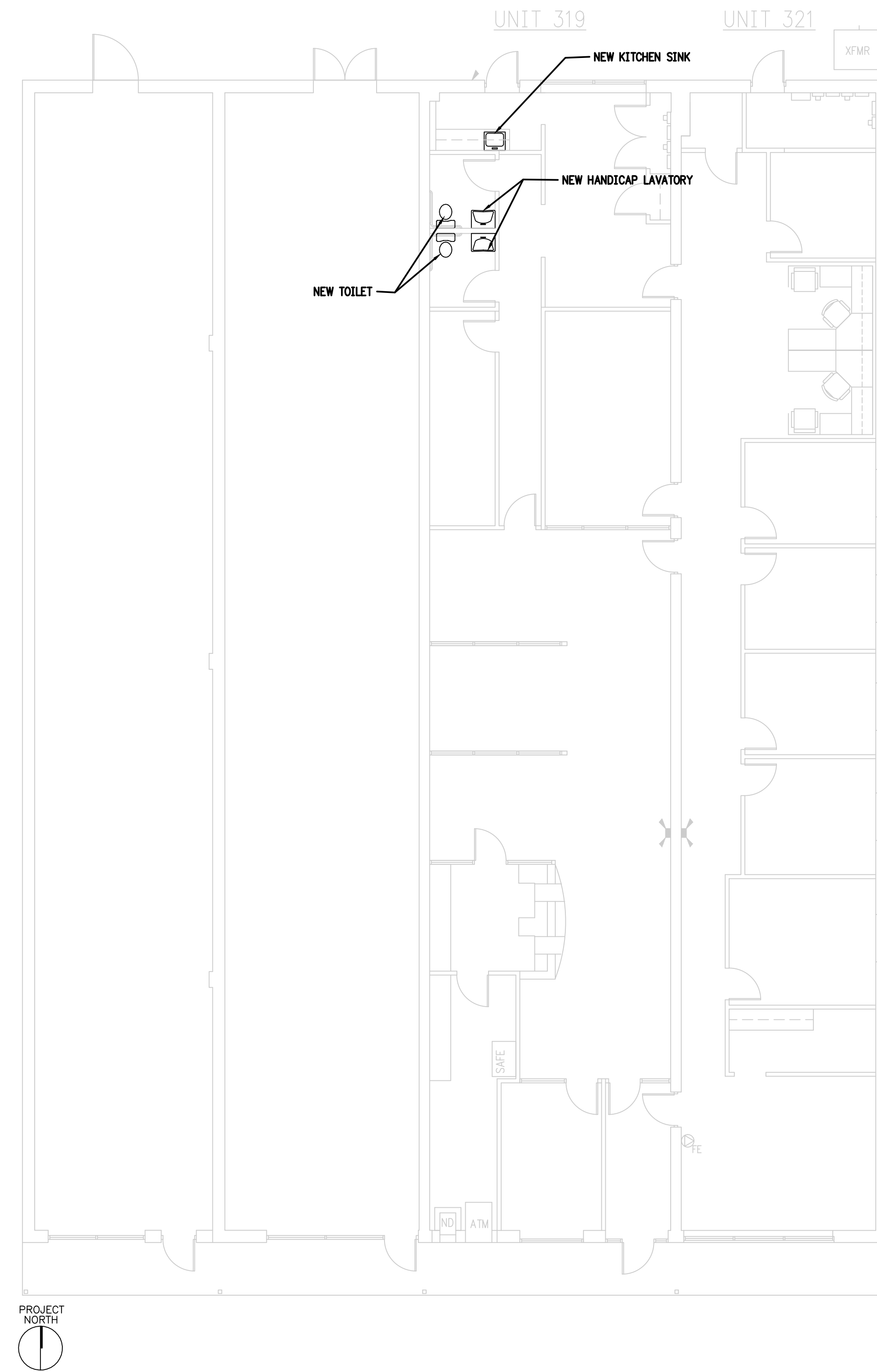
1 PLUMBING PLAN - DEMOLITION

SCALE: 1/8" = 1'-0"



3 RISER DIAGRAM

NTS



2 NEW FLOOR PLAN - PLUMBING

SCALE: 1/8" = 1'-0"

PROPOSED LOANS/LENDING OPERATION  
 BUCKS COUNTY BRANCH  
 315 EAST STREET ROAD  
 WARMINSTER TOWNSHIP, BUCKS COUNTY, PENNSYLVANIA



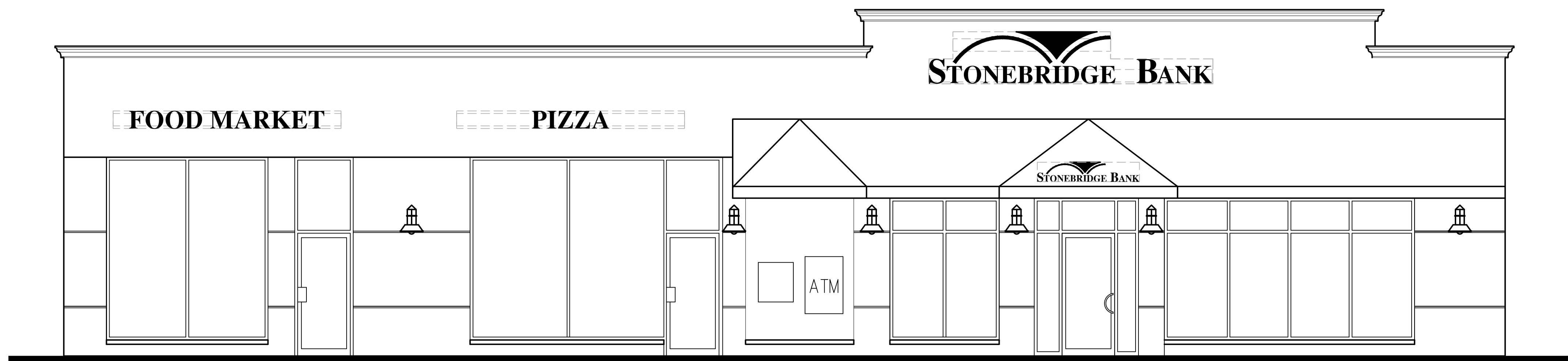
DATE: 22 AUG. 05

REVISIONS

NO.	DESCRIPTION	DATE

P.1

©



PROPOSED LOANS/LENDING OPERATION  
 BUCKS COUNTY BRANCH  
 315 EAST STREET ROAD  
 WARMINSTER TOWNSHIP, BUCKS COUNTY, PENNSYLVANIA



DATE	REVISIONS
1 JAN 065	